



Home Farm, Highworth, SN6 7EH

£235,000  
(Subject to Contract)

*Hanley's*

# Home Farm Highworth Wiltshire SN6 7EH

Situated in an elevated position with far reaching rural views to the rear this three bedroom end terraced property is offered for sale with NO ONWARD CHAIN. Offering the scope to update the accommodation comprises in brief . Ground floor: Entrance porch, hall, ground floor shower room, living room with double glazed sliding doors opening onto the rear garden and an arch through to the dining room, fitted kitchen, lobby and a separate store room. To the first floor: landing with airing cupboard, three good sized bedrooms and a bathroom with a shower over the bath. The property also benefits from double glazing. Outside there is a well maintained garden to the rear with shaped lawn and abundantly stocked flower and shrub borders.



**1 Bathroom. 1 Shower Room**



**3 Bedrooms**



**2 Receptions**

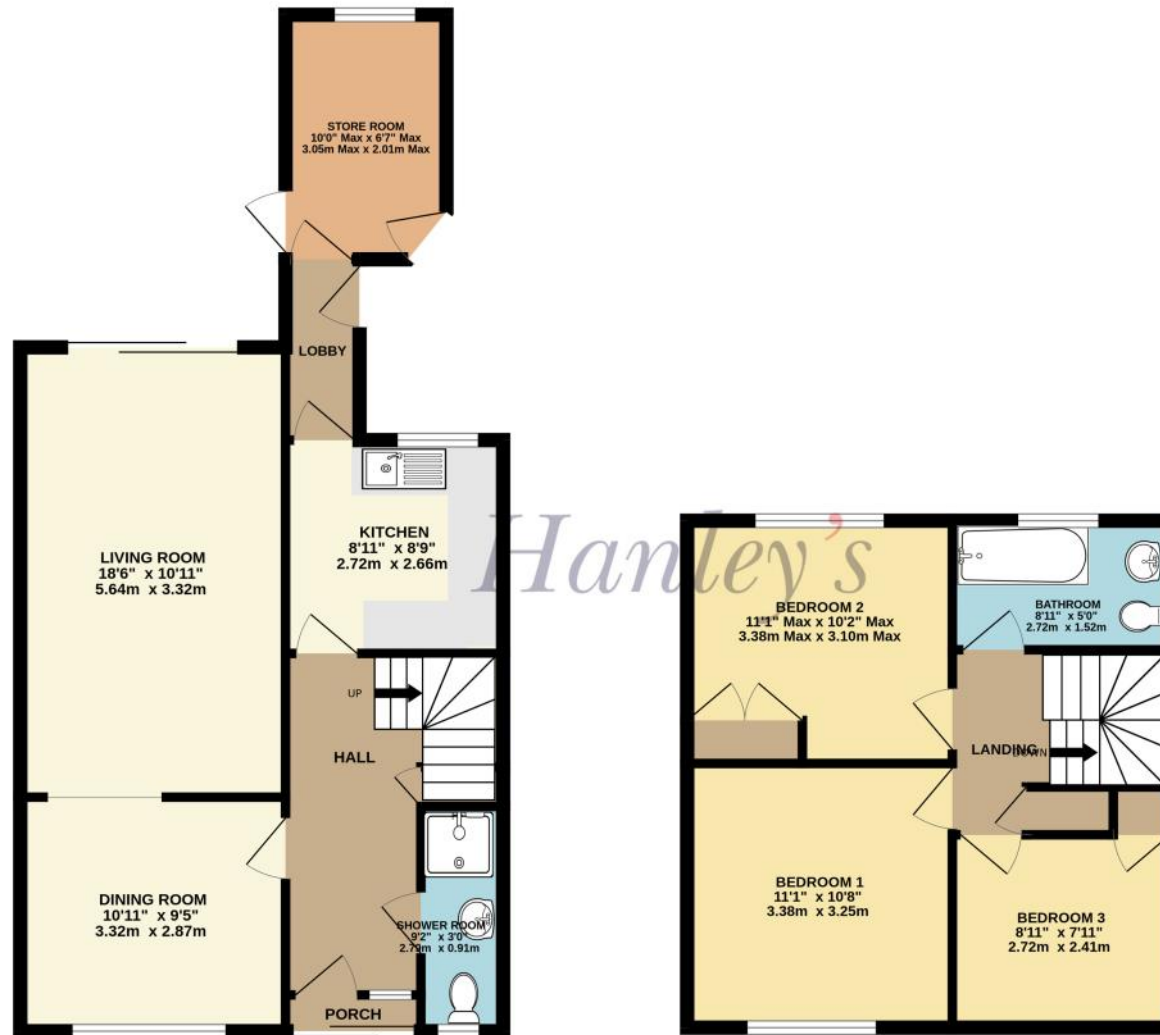
**EPC: TBA**

**Council Tax Band: B**

**Tenure: Freehold**



DISCLAIMER. These particulars, whilst believed to be accurate are set out as a general outline for guidance and do not constitute any part of an offer or contract. Intending purchasers should not rely on them as statements or representation of fact, but must satisfy themselves by inspection or otherwise as to their accuracy. No person in this firm's employment has the authority to make or give any representation or warranty in respect of the property. Floor plan measurements and distances are approximate only. We have not carried out a detailed survey nor tested the services, appliances or specific fittings. Your home is at risk if you do not keep up repayments on a mortgage or other loan secured on it.



TOTAL FLOOR AREA: 1020 sq.ft. (94.7 sq.m.) approx.

Whilst every attempt has been made to ensure the accuracy of the floorplan contained here, measurements of doors, windows, rooms and any other items are approximate and no responsibility is taken for any error, omission or mis-statement. This plan is for illustrative purposes only and should be used as such by any prospective purchaser. The services, systems and appliances shown have not been tested and no guarantee as to their operability or efficiency can be given.  
 Made with Metropix ©2023

