



Knowlands, Highworth, Swindon, SN6 7NE

£215,000  
(Subject to Contract)

*Hanley's*

# Knowlands Highworth Swindon SN6 7NE

A two bedroom mid terrace house situated in a popular location set back from the road. The accommodation comprises: To the ground floor: Living room with understairs storage cupboard and kitchen/dining room with door to the rear garden. To the first floor; landing with airing cupboard and access to the loft space, bathroom with shower over the bath and two good sized bedrooms; master bedroom with fitted wardrobes. Further benefits include gas radiator central heating and double glazing. Outside to the rear is an enclosed garden with paved patio and steps up to a lawned area with gravelled pathway leading to the gated rear access. To the front is a garden with hedge border and pleasant outlook from the garden over a green space with established trees. The property is offered for sale with NO ONWARD CHAIN.



**1 Bathroom**



**2 Bedrooms**



**1 Reception**

**EPC: C 70**

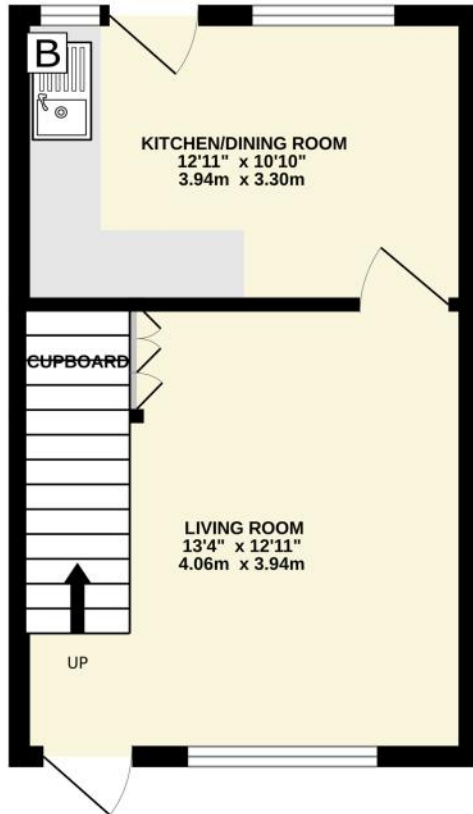
**Council Tax Band: B**

**Tenure: Freehold**

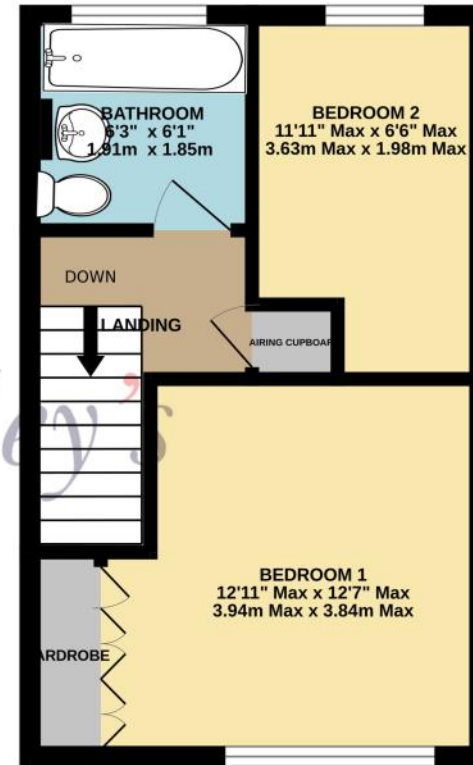


**DISCLAIMER.** These particulars, whilst believed to be accurate are set out as a general outline for guidance and do not constitute any part of an offer or contract. Intending purchasers should not rely on them as statements or representation of fact, but must satisfy themselves by inspection or otherwise as to their accuracy. No person in this firm's employment has the authority to make or give any representation or warranty in respect of the property. Floor plan measurements and distances are approximate only. We have not carried out a detailed survey nor tested the services, appliances or specific fittings. Your home is at risk if you do not keep up repayments on a mortgage or other loan secured on it.

GROUND FLOOR  
258 sq.ft. (23.9 sq.m.) approx.



1ST FLOOR  
257 sq.ft. (23.9 sq.m.) approx.



TOTAL FLOOR AREA: 515 sq.ft. (47.8 sq.m.) approx.

Whilst every attempt has been made to ensure the accuracy of the floorplan contained here, measurements of doors, windows, rooms and any other items are approximate and no responsibility is taken for any error, omission or mis-statement. This plan is for illustrative purposes only and should be used as such by any prospective purchaser. The services, systems and appliances shown have not been tested and no guarantee as to their operability or efficiency can be given.  
Made with Metropix ©2024

Hanley's Estate Agents  
25 High Street, Highworth, SN6 7AG  
Tel: 01793 762005 mail@hanleys.co.uk

