



Cricklade Road, Highworth, SN6 7BL

£327,500
(Subject to Contract)

Hanley's

Cricklade Road Highworth SN6 7BL

Situated in a sought after non-estate location within a short level walk of the High Street, this well presented two bedroom bungalow offers spacious accommodation which comprises: entrance porch, hall/study area, living room with parquet flooring and fireplace, fitted kitchen, garden room/dining room with French doors to the garden, two bedrooms and shower room. Outside to the front is a well maintained garden laid to lawn with shrub and flower borders and garden path. To the rear is an attractive landscaped garden with patio area, steps to the lawn with a selection of shrub and flower borders, garden shed and green house. Gated access leads to the single garage and parking. Further benefits include gas fired radiator central heating and double glazing. The property is offered for sale with **NO ONWARD CHAIN**.



1 Shower Room



2 Bedrooms



2 Receptions

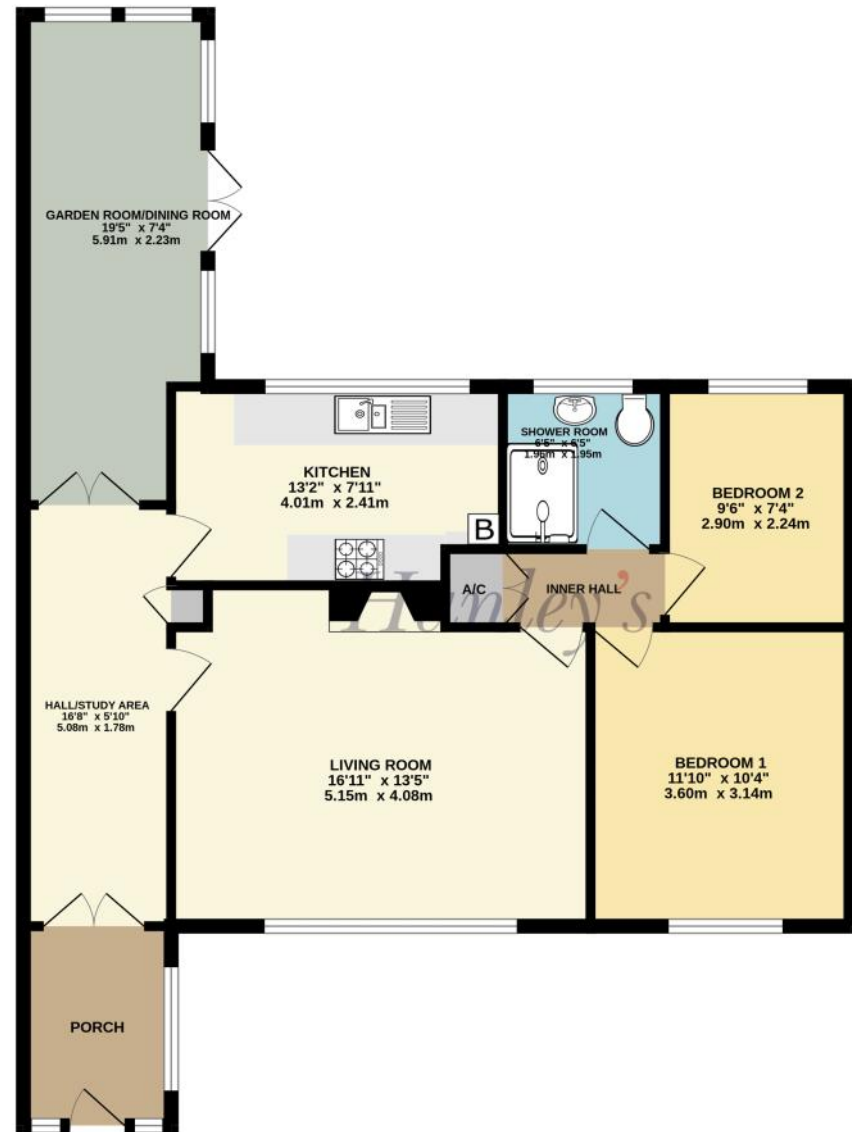
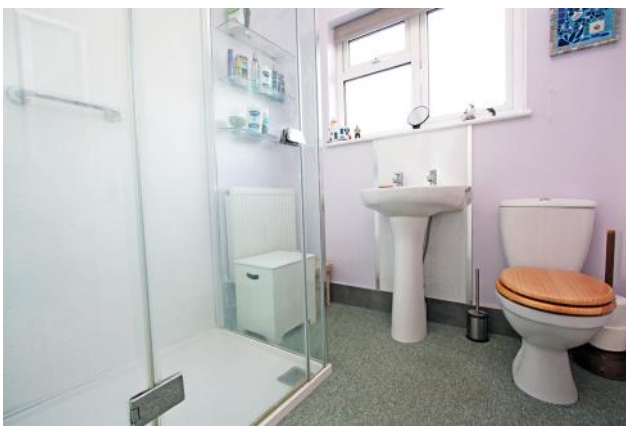
EPC: 61 D

Council Tax Band: C

Tenure: Freehold



DISCLAIMER. These particulars, whilst believed to be accurate are set out as a general outline for guidance and do not constitute any part of an offer or contract. Intending purchasers should not rely on them as statements or representation of fact, but must satisfy themselves by inspection or otherwise as to their accuracy. No person in this firm's employment has the authority to make or give any representation or warranty in respect of the property. Floor plan measurements and distances are approximate only. We have not carried out a detailed survey nor tested the services, appliances or specific fittings. Your home is at risk if you do not keep up repayments on a mortgage or other loan secured on it.



TOTAL FLOOR AREA : 846 sq.ft. (78.6 sq.m.) approx.

Hanley's Estate Agents
 25 High Street, Highworth, SN6 7AG
 Tel: 01793 762005 mail@hanleys.co.uk

