



Sevenfields, Highworth, SN6 7NF

£365,000
(Offers in excess of)

Hanley's

Sevenfields Highworth SN6 7NF

A well presented three bedroom link detached house which has been extended to provide spacious accommodation. Set back from the road in a popular location, the accommodation comprises: porch, spacious entrance hall, living room with double doors opening to the dining room with French doors to the rear garden, fitted kitchen/breakfast room with extensive wall and base units and fitted breakfast bar, re-fitted ground floor shower room and a utility area/rear lobby with personal door to the garage. To the first floor are three bedrooms all with built-in wardrobes and a family bathroom with bath and shower over. Outside to the front is an attractive garden, laid to lawn with a selection of flower and shrub borders and a block paved driveway providing parking for several vehicles leading to the attached single garage with power and light. To the rear is an enclosed southerly facing landscaped garden with a large patio area, attractive circular lawn and decking area. The property benefits from gas radiator central heating, double glazing and a new gas fired boiler fitted in 2022 with a ten year guarantee. **NO ONWARD CHAIN.**



2 Bathrooms



3 Bedrooms



2 Receptions

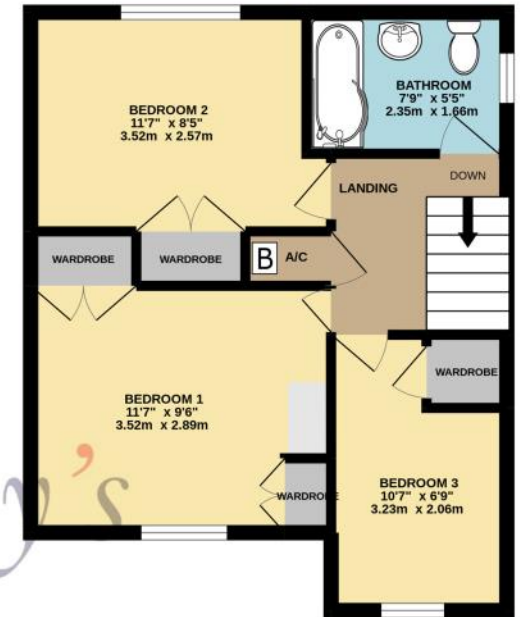
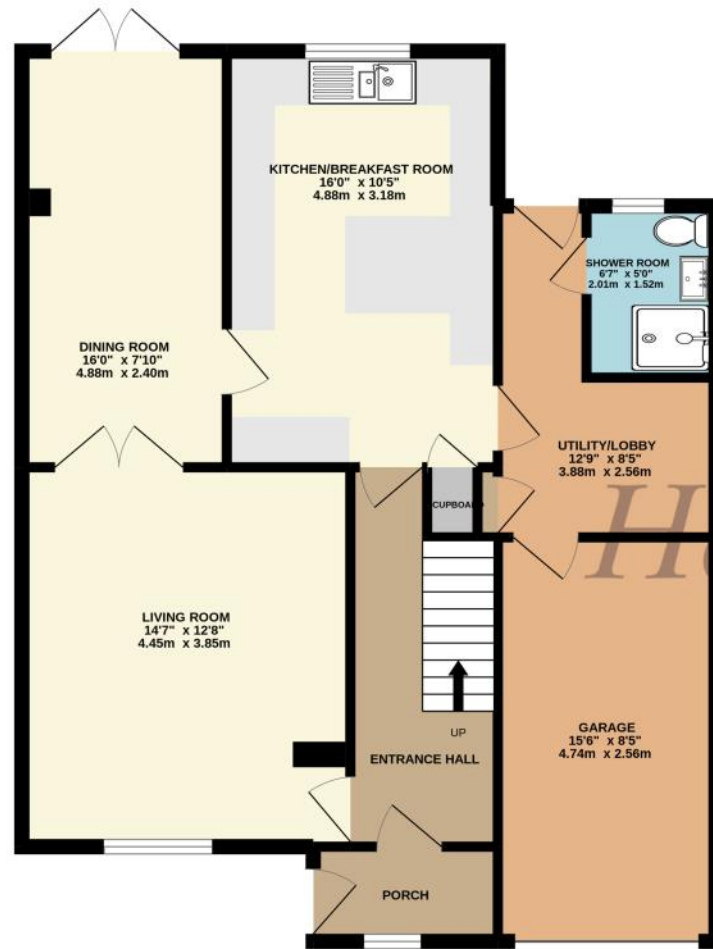
EPC: D 67

Council Tax Band: D

Tenure: Freehold



DISCLAIMER. These particulars, whilst believed to be accurate are set out as a general outline for guidance and do not constitute any part of an offer or contract. Intending purchasers should not rely on them as statements or representation of fact, but must satisfy themselves by inspection or otherwise as to their accuracy. No person in this firm's employment has the authority to make or give any representation or warranty in respect of the property. Floor plan measurements and distances are approximate only. We have not carried out a detailed survey nor tested the services, appliances or specific fittings. Your home is at risk if you do not keep up repayments on a mortgage or other loan secured on it.



TOTAL FLOOR AREA : 1207 sq.ft. (112.2 sq.m.) approx.

Hanley's Estate Agents
 25 High Street, Highworth, SN6 7AG
 Tel: 01793 762005 mail@hanleys.co.uk

