



Tower View, Faringdon, Oxfordshire, SN7 7UN

£294,000  
(Offers in the region of)

*Hanley's*

# Tower View Faringdon Oxfordshire SN7 7UN

An extremely well presented three bedroom mid terrace property situated in a popular cul-de-sac location within a short walk to the High Street and Market Place. The stylish accommodation comprises: To the ground floor; entrance porch, dual aspect living/dining room with patio doors opening onto the rear garden, kitchen with built-in oven and hob. To the first floor are three bedrooms; two with fitted wardrobes and a bathroom with shower over the bath and separate W.C. The property further benefits from gas radiator central heating and double glazing. Outside to the front is a garden with flower border and driveway parking leading to the integral single garage with power and light. To the rear is an enclosed garden with large patio area and steps down to a lawned area with shrub and flower borders, shed with a further area with raised beds and gated access to the rear, garden shed with electric, greenhouse and a manual sun awning.



**1 Bathroom**



**3 Bedrooms**



**1 Reception**

**EPC: C 69**

**Council Tax Band: C**

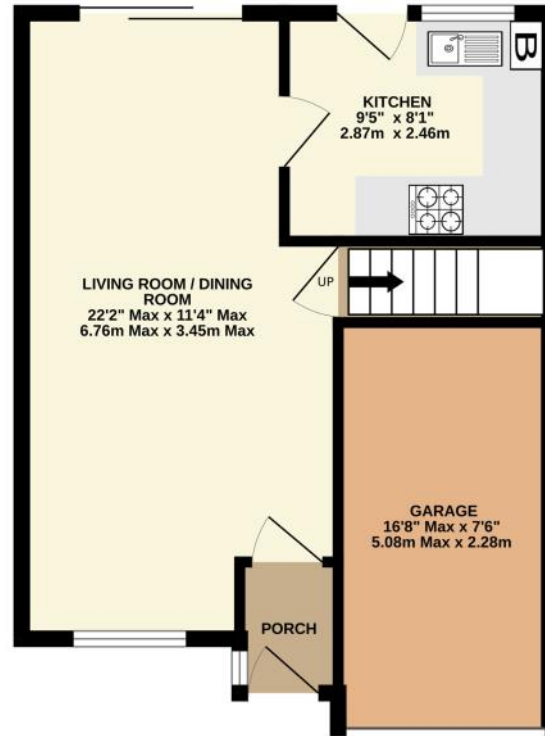
**Tenure: Freehold**



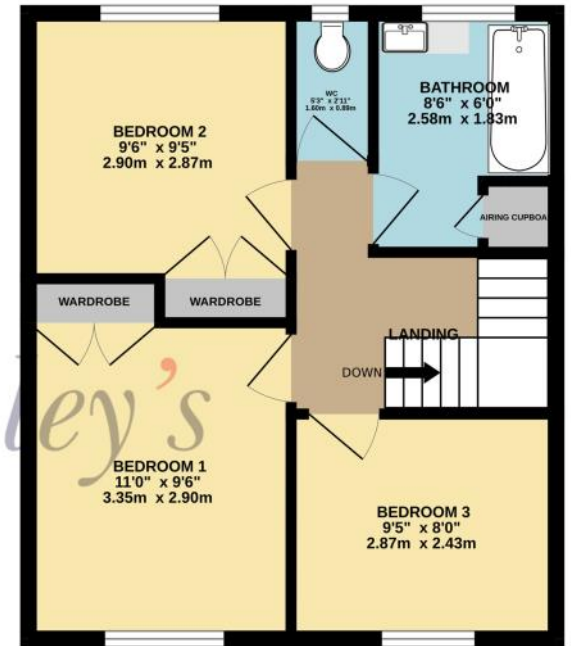
**DISCLAIMER.** These particulars, whilst believed to be accurate are set out as a general outline for guidance and do not constitute any part of an offer or contract. Intending purchasers should not rely on them as statements or representation of fact, but must satisfy themselves by inspection or otherwise as to their accuracy. No person in this firm's employment has the authority to make or give any representation or warranty in respect of the property. Floor plan measurements and distances are approximate only. We have not carried out a detailed survey nor tested the services, appliances or specific fittings. Your home is at risk if you do not keep up repayments on a mortgage or other loan secured on it.



GROUND FLOOR  
446 sq.ft. (41.4 sq.m.) approx.



1ST FLOOR  
416 sq.ft. (38.6 sq.m.) approx.



TOTAL FLOOR AREA : 862 sq.ft. (80.0 sq.m.) approx.

Whilst every attempt has been made to ensure the accuracy of the floorplan contained here, measurements of doors, windows, rooms and any other items are approximate and no responsibility is taken for any error, omission or mis-statement. This plan is for illustrative purposes only and should be used as such by any prospective purchaser. The services, systems and appliances shown have not been tested and no guarantee as to their operability or efficiency can be given.  
Made with Metropix ©2024

