



Sevenfields, Highworth, Swindon, SN6 7NG

£375,000  
(Subject to Contract)

*Hanley's*

# Sevenfields Highworth Swindon SN6 7NG

A beautifully presented four bedroom link detached property set back from the road in this popular cul-de-sac location. Updated by the current owners, including a newly fitted bathroom suite and re-decoration throughout. The spacious accommodation comprises: To the ground floor: Entrance hall, living room, separate dining room, fitted kitchen and separate utility room/cloakroom. To the first floor are four good sized bedrooms; two with wardrobes and a re-fitted bathroom with bath and shower over. Outside to the rear is a landscaped garden with separate patio and decking area and garden laid to lawn with a selection of shrub and flower borders. To the front is a block paved driveway providing parking for several vehicles leading to the single garage with power and light. Further benefits include gas central heating and UPVC double glazing.



**1 Bathroom**



**4 Bedrooms**



**2 Receptions**

**EPC: D 64**

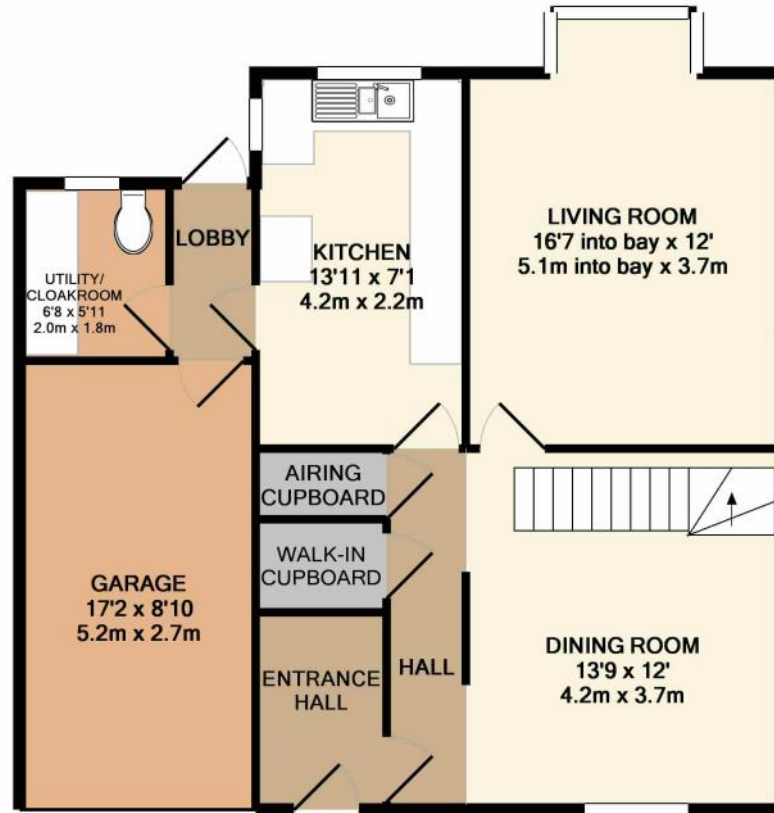
**Council Tax Band: E**

**Tenure: Freehold**

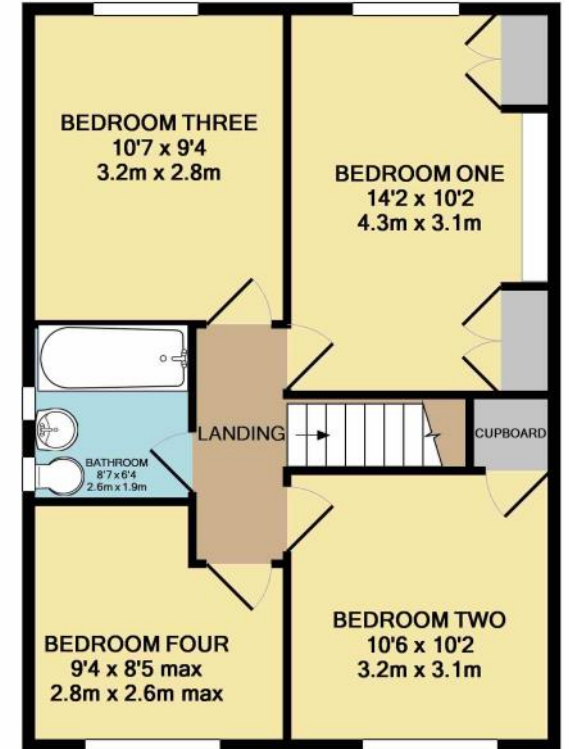


DISCLAIMER. These particulars, whilst believed to be accurate are set out as a general outline for guidance and do not constitute any part of an offer or contract. Intending purchasers should not rely on them as statements or representation of fact, but must satisfy themselves by inspection or otherwise as to their accuracy. No person in this firm's employment has the authority to make or give any representation or warranty in respect of the property. Floor plan measurements and distances are approximate only. We have not carried out a detailed survey nor tested the services, appliances or specific fittings. Your home is at risk if you do not keep up repayments on a mortgage or other loan secured on it.





GROUND FLOOR  
 APPROX. FLOOR  
 AREA 789 SQ.FT.  
 (73.3 SQ.M.)



1ST FLOOR  
 APPROX. FLOOR  
 AREA 561 SQ.FT.  
 (52.2 SQ.M.)

TOTAL APPROX. FLOOR AREA 1350 SQ.FT. (125.4 SQ.M.)

