



Crane Furlong, Highworth, Swindon, SN6 7JX

£315,000
(Subject to Contract)

Hanley's

Crane Furlong Highworth SN6 7JX

A well presented three bedroom split-level property situated in a popular location with far reaching views to the front. The property has been extended and offers spacious accommodation which comprises: hall with utility cupboard, hallway with cloakroom and access to a large low level storage area, built-in cloaks cupboard, dining room which opens onto the family room with patio doors opening onto the rear garden, fitted kitchen with built-in appliances and large larder cupboard. Steps from the dining room lead to the living room with open views towards the Cotswolds, re-fitted bathroom suite with bath and shower over and three good sized bedrooms; two with fitted wardrobes. Outside to the rear is an established southerly facing garden with patio area, steps up to a lawned area with shrub borders and gated rear access. To the front is a driveway providing parking for two vehicles and an attached garage with power and light. Further benefits includes gas radiator central heating and double glazing.



1 Bathroom



3 Bedrooms



3 Receptions

EPC: C 72

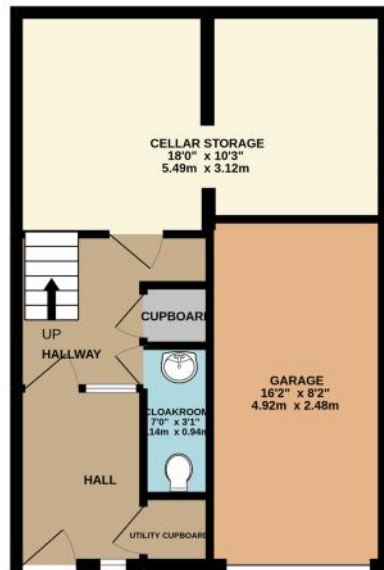
Council Tax Band: C

Tenure: Freehold



DISCLAIMER. These particulars, whilst believed to be accurate are set out as a general outline for guidance and do not constitute any part of an offer or contract. Intending purchasers should not rely on them as statements or representation of fact, but must satisfy themselves by inspection or otherwise as to their accuracy. No person in this firm's employment has the authority to make or give any representation or warranty in respect of the property. Floor plan measurements and distances are approximate only. We have not carried out a detailed survey nor tested the services, appliances or specific fittings. Your home is at risk if you do not keep up repayments on a mortgage or other loan secured on it.

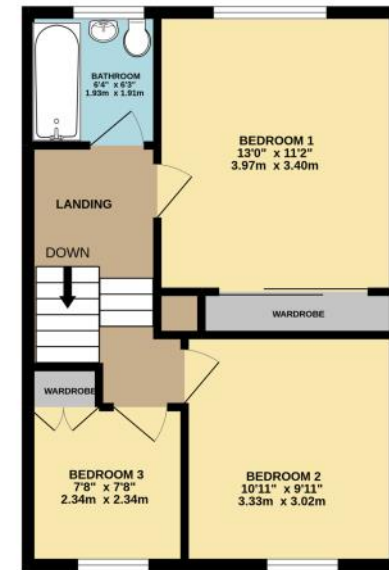
GROUND FLOOR
438 sq.ft. (40.7 sq.m.) approx.



FIRST FLOOR
580 sq.ft. (53.9 sq.m.) approx.



SECOND FLOOR
443 sq.ft. (41.1 sq.m.) approx.



TOTAL FLOOR AREA : 1461 sq.ft. (135.7 sq.m.) approx.



Hanley's Estate Agents
25 High Street, Highworth, SN6 7AG
Tel: 01793 762005 mail@hanleys.co.uk

