



Spa Close, Highworth, Swindon, SN6 7PJ

£495,000
(Subject to Contract)

Hanley's

Spa Close Highworth SN6 7PJ

An impressive four bedroom detached property situated in a popular location with far reaching rural views to the front. Updated throughout, this beautifully presented home offers versatile and spacious accommodation which comprises: Entrance hall with door to the garage, cloakroom, kitchen/ breakfast room with built-in double oven, hob and extractor fan over, garden room with French doors opening onto the rear garden, dual aspect living room with fitted fire and archway through to the dining room with French doors to the garden. To the first floor is a spacious and light landing with airing cupboard, four good sized bedrooms and bathroom with bath and 'rainfall' shower over. Outside to the rear is a private, established garden which has been landscaped with a large patio and steps to a lawned area with further patio area with superb far reaching views. To the front is a garden laid to lawn with shrub and flower borders and a large block paved driveway providing parking for several vehicles leading to the double garage with power light and utility area with plumbing for a washing machine. The property further benefits from gas radiator central heating, double glazing and is offered for sale with no onward chain.



1 Bathroom



4 Bedrooms



2 Receptions

EPC: C 71

Council Tax Band: E

Tenure: Freehold

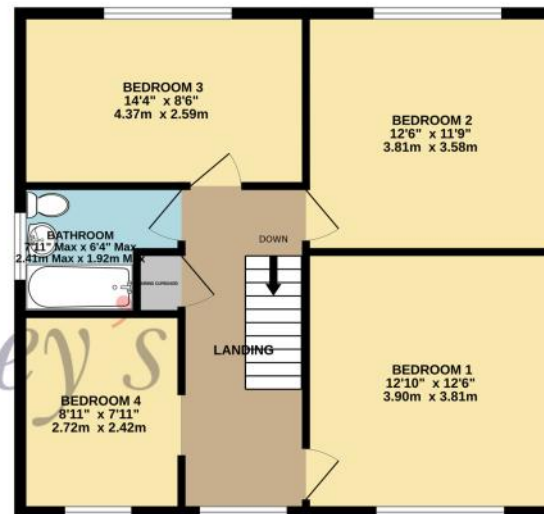


DISCLAIMER. These particulars, whilst believed to be accurate are set out as a general outline for guidance and do not constitute any part of an offer or contract. Intending purchasers should not rely on them as statements or representation of fact, but must satisfy themselves by inspection or otherwise as to their accuracy. No person in this firm's employment has the authority to make or give any representation or warranty in respect of the property. Floor plan measurements and distances are approximate only. We have not carried out a detailed survey nor tested the services, appliances or specific fittings. Your home is at risk if you do not keep up repayments on a mortgage or other loan secured on it.

GROUND FLOOR
908 sq.ft. (84.4 sq.m.) approx.



1ST FLOOR
650 sq.ft. (60.3 sq.m.) approx.



TOTAL FLOOR AREA : 1558 sq.ft. (144.7 sq.m.) approx.



