



Cobbett Court, Highworth, SN6 7AE

£145,000
(Leasehold)

Hanley's

Cobbett Court Highworth SN6 7AE

A one bedroom first floor apartment situated in the sought after over 60's Cobbett Court development just a short level walk from the High Street and local amenities. The accommodation comprises: Entrance hall with large walk-in storage cupboard, living/dining room with doors opening to the fitted kitchen with built-in oven, hob with extractor hood over, fridge, freezer and washing machine, double bedroom with built-in mirror fronted wardrobe and shower room. Further benefits include electric storage heating, double glazing, 24 hour call line, on-site house manager, an elegant residents' lounge, residents' parking, laundry room and communal gardens. The property is offered for sale with NO ONWARD CHAIN.

Leasehold property. A lease of 125 years was granted from 2007. There is a management charge of £3176.22 per annum. Ground rent: £425 per annum.



1 Shower Room



1 Bedroom



1 Reception

EPC:

Council Tax Band: C

Tenure: Leasehold

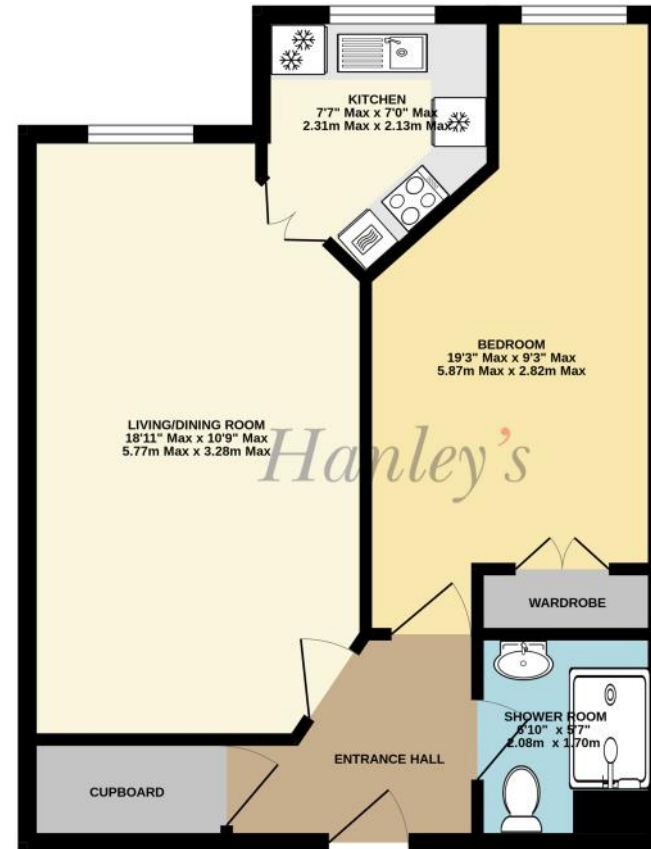


DISCLAIMER. These particulars, whilst believed to be accurate are set out as a general outline for guidance and do not constitute any part of an offer or contract. Intending purchasers should not rely on them as statements or representation of fact, but must satisfy themselves by inspection or otherwise as to their accuracy. No person in this firm's employment has the authority to make or give any representation or warranty in respect of the property. Floor plan measurements and distances are approximate only. We have not carried out a detailed survey nor tested the services, appliances or specific fittings. Your home is at risk if you do not keep up repayments on a mortgage or other loan secured on it.



Residents' communal areas

GROUND FLOOR
481 sq.ft. (44.7 sq.m.) approx.



TOTAL FLOOR AREA : 481 sq.ft. (44.7 sq.m.) approx.

Whilst every attempt has been made to ensure the accuracy of the floorplan contained here, measurements of doors, windows, rooms and any other items are approximate and no responsibility is taken for any error, omission or mis-statement. This plan is for illustrative purposes only and should be used as such by any prospective purchaser. The services, systems and appliances shown have not been tested and no guarantee as to their operability or efficiency can be given.

Made with Metreplex ©2024

Hanley's Estate Agents
25 High Street, Highworth, SN6 7AG
Tel: 01793 762005 mail@hanleys.co.uk

