



Knowlands, Highworth, SN6 7NB

£321,000  
(Subject to Contract)

*Hanley's*



## Knowlands Highworth SN6 7NB

An extended and well presented three bedroom end of terrace house situated on a corner plot close to an open green area. The property offers versatile accommodation comprising: living room, dining room, fitted kitchen/breakfast room with built-in gas 'Range' style cooker and dishwasher, conservatory, utility room and ground floor shower room. To the first floor: spacious landing/study area, three good sized bedrooms; two with fitted wardrobes and spacious bathroom. Outside to the rear is a enclosed garden which has been landscaped with artificial grass and laid to stone chippings, garden shed and gated access to the rear and to the side of the property. The front garden has a selection of shrubs and trees. A single garage with power and light is located close-by. Further benefits include gas fired radiator central heating and double glazing.



**2 Bathrooms**



**3 Bedrooms**



**2 Receptions**

**EPC: C 72**

**Council Tax Band: B**

**Tenure: Freehold**

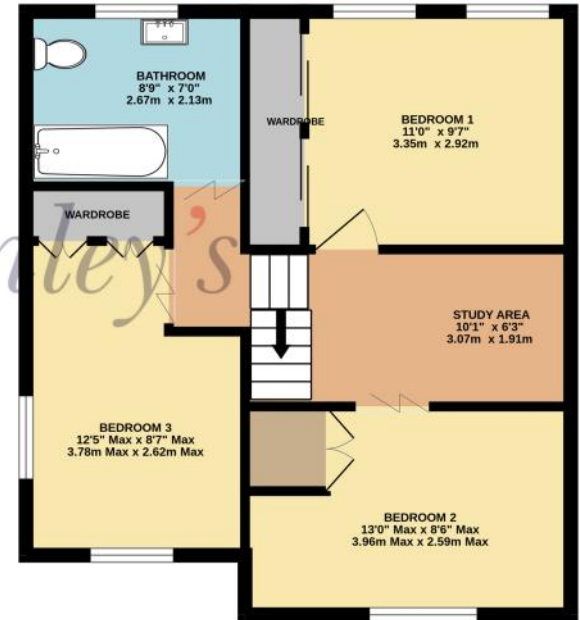
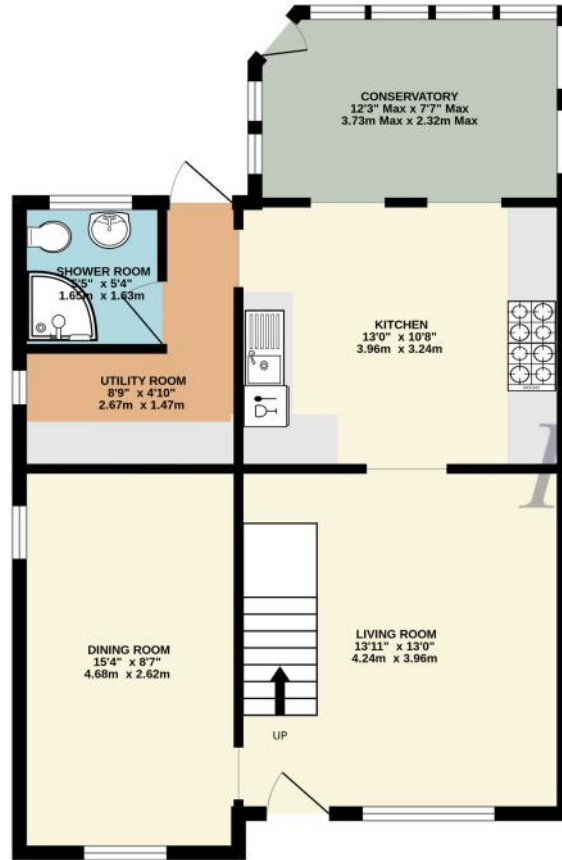


**DISCLAIMER.** These particulars, whilst believed to be accurate are set out as a general outline for guidance and do not constitute any part of an offer or contract. Intending purchasers should not rely on them as statements or representation of fact, but must satisfy themselves by inspection or otherwise as to their accuracy. No person in this firm's employment has the authority to make or give any representation or warranty in respect of the property. Floor plan measurements and distances are approximate only. We have not carried out a detailed survey nor tested the services, appliances or specific fittings. Your home is at risk if you do not keep up repayments on a mortgage or other loan secured on it.



GROUND FLOOR  
637 sq.ft. (59.2 sq.m.) approx.

1ST FLOOR  
503 sq.ft. (46.7 sq.m.) approx.



TOTAL FLOOR AREA : 1140 sq.ft. (105.9 sq.m.) approx.

Whilst every attempt has been made to ensure the accuracy of the floorplan contained here, measurements of doors, windows, rooms and any other items are approximate and no responsibility is taken for any error, omission or mis-statement. This plan is for illustrative purposes only and should be used as such by any prospective purchaser. The services, systems and appliances shown have not been tested and no guarantee as to their operability or efficiency can be given.  
Made with Metropix ©2024



