

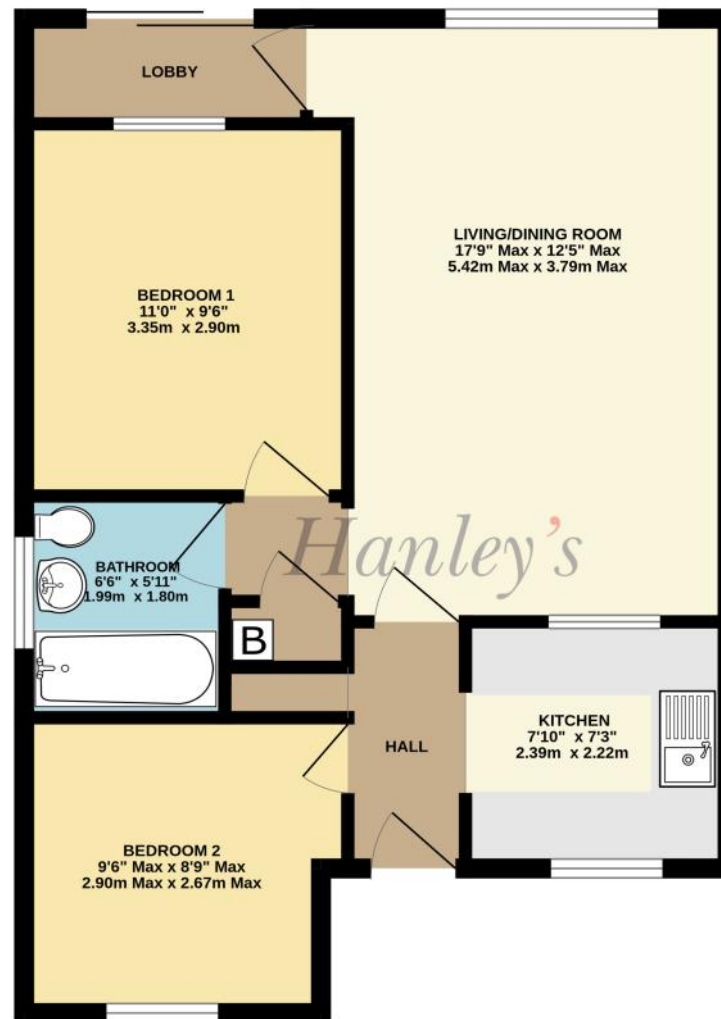
£259,950 (Subject to Contract)

*Hanley's*



## **The Cullerns, Highworth, Wiltshire, SN6 7NR**

A two bedroom end terraced bungalow situated on a corner plot in a cul de sac location just a short walk from the High Street. The accommodation which requires some updating comprises: Entrance hall, living/dining room, rear lobby with double glazed patio door opening onto the rear garden, fitted kitchen, two bedrooms and bathroom with window to the side and shower over the bath. The property also benefits from gas radiator central heating and double glazing. Outside there is drive way parking to the front and an attractive Southerly facing garden to the rear with patio area, timber shed and gated access. The property is offered for sale with NO ONWARD CHAIN. Tenure: Freehold. Council Tax Band: C. EPC: TBA.



TOTAL FLOOR AREA : 557 sq.ft. (51.8 sq.m.) approx.

Whilst every attempt has been made to ensure the accuracy of the floorplan contained here, measurements of doors, windows, rooms and any other items are approximate and no responsibility is taken for any error, omission or mis-statement. This plan is for illustrative purposes only and should be used as such by any prospective purchaser. The services, systems and appliances shown have not been tested and no guarantee as to their operability or efficiency can be given.

Made with Metropix ©2025

**DISCLAIMER.** These particulars, whilst believed to be accurate are set out as a general outline for guidance and do not constitute any part of an offer or contract. Intending purchasers should not rely on them as statements or representation of fact, but must satisfy themselves by inspection or otherwise as to their accuracy. No person in this firm's employment has the authority to make or give any representation or warranty in respect of the property. Floor plan measurements and distances are approximate only. We have not carried out a detailed survey nor tested the services, appliances or specific fittings. Your home is at risk if you do not keep up repayments on a mortgage or other loan secured on it.

