



Bydemill Gardens, Highworth, SN6 7BS

£425,000
(Subject to Contract)

Hanley's

Bydemill Gardens Highworth SN6 7BS

Situated in a sought after cul-de-sac location just a short level walk from the High Street and Market Place this well presented three bedroom detached house enjoys far reaching rural views to the rear. The spacious accommodation comprises: Entrance hall, living room with fireplace and doors through to a separate dining room with double glazed patio doors opening to the rear garden, fitted kitchen and downstairs cloakroom. To the first floor: landing with access to a partly boarded and insulated loft, airing cupboard, three double bedrooms; one with an extensive range of fitted wardrobes and bedroom furniture and a re-fitted bathroom with shower over the bath. Outside to the rear is a large terraced garden which has been attractively landscaped with patio areas, shaped lawn, mature trees and bushes. There is driveway parking to the front leading to the attached garage with power, light and EV charging point. Gated side access leads to the rear garden with an external storage cupboard. The property also benefits from gas radiator central heating, double glazing, cavity wall insulation and the remainder of a 25 year guarantee for the new garage roof fitted c.2 years ago.



1 Bathroom



3 Bedrooms



2 Receptions

EPC: TBA

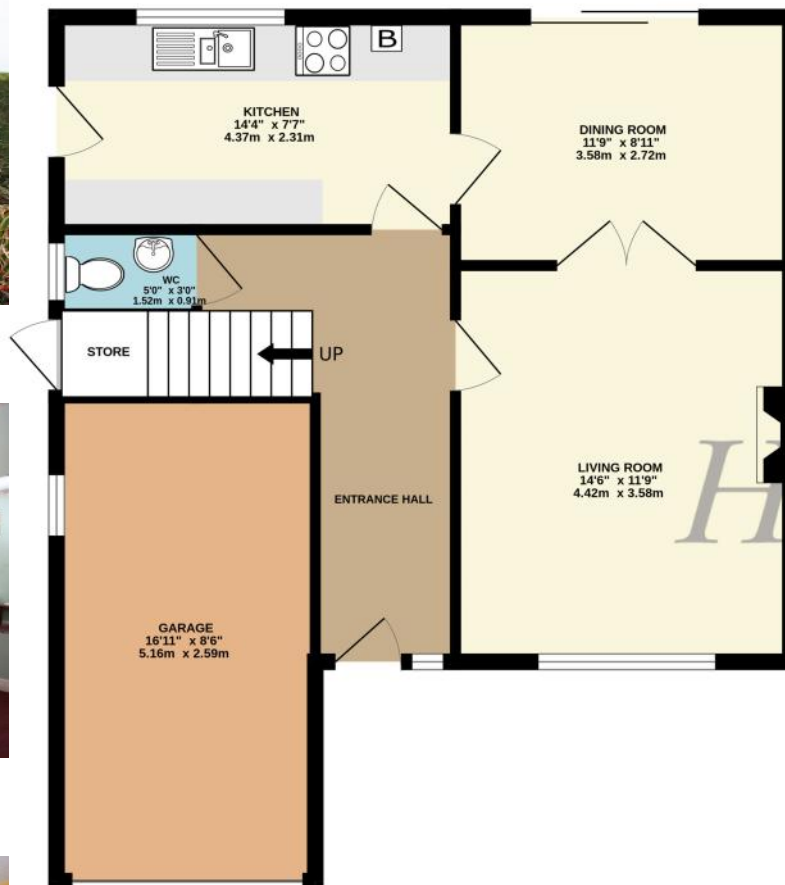
Council Tax Band: E

Tenure: Freehold



DISCLAIMER. These particulars, whilst believed to be accurate are set out as a general outline for guidance and do not constitute any part of an offer or contract. Intending purchasers should not rely on them as statements or representation of fact, but must satisfy themselves by inspection or otherwise as to their accuracy. No person in this firm's employment has the authority to make or give any representation or warranty in respect of the property. Floor plan measurements and distances are approximate only. We have not carried out a detailed survey nor tested the services, appliances or specific fittings. Your home is at risk if you do not keep up repayments on a mortgage or other loan secured on it.





TOTAL FLOOR AREA : 1263 sq.ft. (117.3 sq.m.) approx.

Whilst every attempt has been made to ensure the accuracy of the floorplan contained here, measurements of doors, windows, rooms and any other items are approximate and no responsibility is taken for any error, omission or mis-statement. This plan is for illustrative purposes only and should be used as such by any prospective purchaser. The services, systems and appliances shown have not been tested and no guarantee as to their operability or efficiency can be given.

Made with Metropix ©2025

Hanley's Estate Agents
25 High Street, Highworth, SN6 7AG
Tel: 01793 762005 mail@hanleys.co.uk

