



Somerset Court, Wanborough, Swindon, SN4 0FD

£299,995  
(Subject to Contract)

*Hanley's*

# Somerset Court, Wanborough, Swindon, SN4 0FD

Set in a superb location overlooking open farmland to the rear, an attractive three bedroom mews style property which is set just off the High Street in Wanborough in a small select development of just eight properties. Set over three floors the accommodation comprises: entrance hall, ground floor W.C., fitted kitchen with integrated oven, hob and extractor over, living/dining room with French doors opening to the garden. To the first floor: landing: two double bedrooms; one with fitted wardrobes and bathroom with shower over the bath. To the second floor a third double bedroom with built-in cupboard. Outside to the rear the garden is mainly laid to lawn with paved patio area, gravelled path and gravelled area overlooking open fields. Timber shed. To the front there is a single car port. The property further benefits from gas fired radiator central heating and double glazing.

Wanborough is a very popular and active village with pubs, church and primary school and is close to The Ridgeway offering many walks.

Excellent road access to Swindon centre with mainline station to London Paddington is c.5.2 miles away, A419 and M4 junction 15 are both close-by.



**1 Bathroom**



**3 Bedrooms**



**1 Reception**

**EPC: C77**

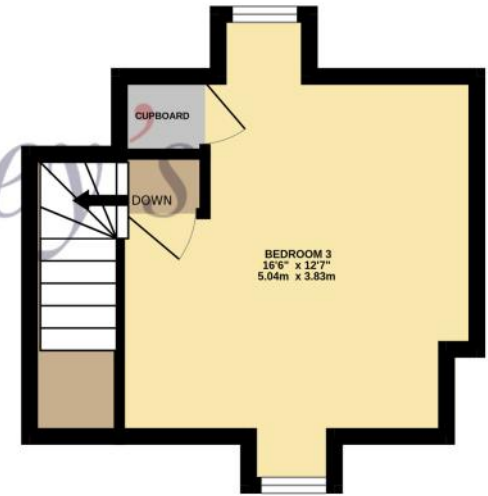
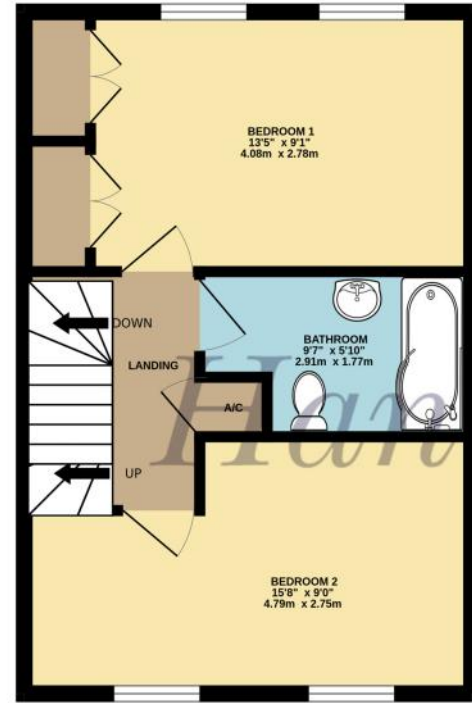
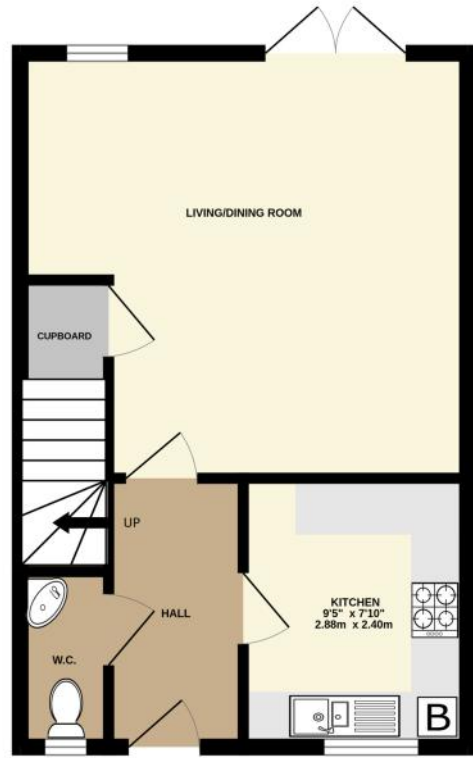
**Council Tax Band: D**

**Tenure: Freehold**



DISCLAIMER. These particulars, whilst believed to be accurate are set out as a general outline for guidance and do not constitute any part of an offer or contract. Intending purchasers should not rely on them as statements or representation of fact, but must satisfy themselves by inspection or otherwise as to their accuracy. No person in this firm's employment has the authority to make or give any representation or warranty in respect of the property. Floor plan measurements and distances are approximate only. We have not carried out a detailed survey nor tested the services, appliances or specific fittings. Your home is at risk if you do not keep up repayments on a mortgage or other loan secured on it.





TOTAL FLOOR AREA : 958 sq.ft. (89.0 sq.m.) approx.

Whilst every attempt has been made to ensure the accuracy of the floorplan contained here, measurements of doors, windows, rooms and any other items are approximate and no responsibility is taken for any error, omission or mis-statement. This plan is for illustrative purposes only and should be used as such by any prospective purchaser. The services, systems and appliances shown have not been tested and no guarantee as to their operability or efficiency can be given.  
Made with Metropix ©2025

Hanley's Estate Agents  
 25 High Street, Highworth, SN6 7AG  
 Tel: 01793 762005 mail@hanleys.co.uk

