



15 Priory Green, Highworth, SN6 7NU

£475,000
(Subject to Contract)

Hanley's

15 Priory Green Highworth SN6 7NU

Situated within a short walk of the High Street and Market Place this extended four/five bedroom link detached house offers well presented, spacious and flexible accommodation with far reaching views to the rear. Comprising: hall, cloakroom (formerly a shower room), dining room, living room with bi-fold doors opening onto the conservatory, attractively re-fitted kitchen/breakfast room/family room with solid wood work surfaces, integrated fridge, freezer, dishwasher, range style electric cooker with extractor hood over, central island with breakfast bar and French doors opening onto the garden, lobby with door to utility cupboard. Reception room/bedroom 5; currently used as a playroom. To the first floor: landing, four good sized bedrooms; two with far reaching views and large bathroom with bath and separate shower cubicle. Outside to the rear is an enclosed landscaped garden with distant views, patio areas, shaped lawn and a very useful garden store with double doors. Gated side access to the front with an attractive area laid to stone chipping with established shrubs, blocked paved driveway parking for several vehicles. The property further benefits from bamboo and Oak flooring, gas fired radiator central heating and double glazing.



1 Bathroom



4/5 Bedrooms



3 Receptions

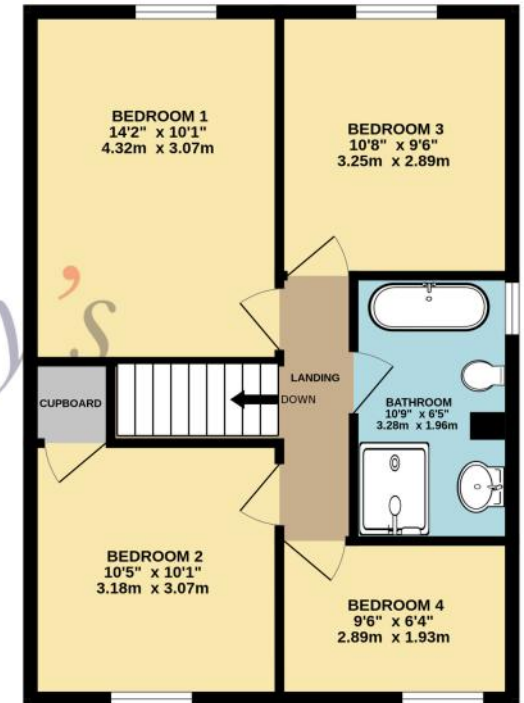
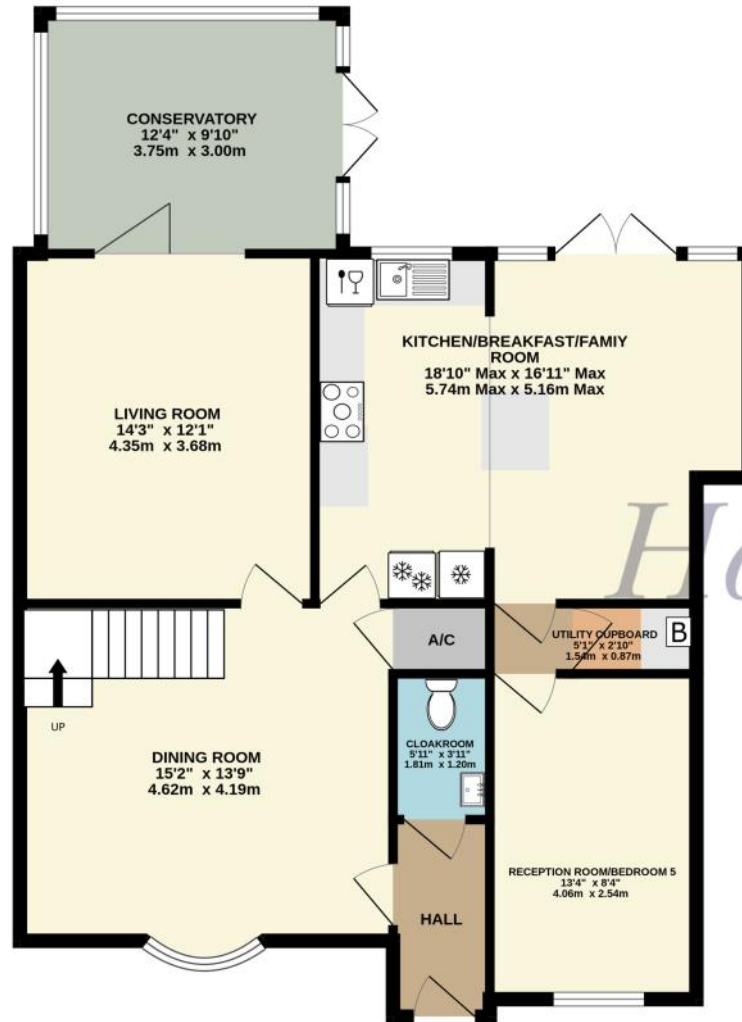
EPC: C69

Council Tax Band: E

Tenure: Freehold



DISCLAIMER. These particulars, whilst believed to be accurate are set out as a general outline for guidance and do not constitute any part of an offer or contract. Intending purchasers should not rely on them as statements or representation of fact, but must satisfy themselves by inspection or otherwise as to their accuracy. No person in this firm's employment has the authority to make or give any representation or warranty in respect of the property. Floor plan measurements and distances are approximate only. We have not carried out a detailed survey nor tested the services, appliances or specific fittings. Your home is at risk if you do not keep up repayments on a mortgage or other loan secured on it.



TOTAL FLOOR AREA : 1496 sq.ft. (139.0 sq.m.) approx.

Hanley's Estate Agents
 25 High Street, Highworth, SN6 7AG
 Tel: 01793 762005 mail@hanleys.co.uk

