



Grove Orchard, Highworth, Swindon, SN6 7LB

£435,000
(Subject to Contract)

Hanley's

Grove Orchard Highworth SN6 7LB

An extended three bedroom detached bungalow set on a generous plot within a short walk to local facilities including doctors surgery and school. The property offers spacious accommodation comprising: entrance hall with walk-in cupboard housing the gas fired boiler, large living/dining room with fireplace and sliding patio doors to the rear garden, fitted kitchen/breakfast room with integrated double oven, hob with extractor fan over and French doors to the garden, archway through to the utility room with a personal door to the garage. Inner hall with access to the loft space, three good sized bedrooms; two with fitted wardrobes and bathroom with bath, low level W.C., wash basin and separate shower cubicle. To the rear is a good sized enclosed garden laid to lawn with a selection of mature shrubs and bushes, paved patio area, pond, greenhouse, garden shed, gated side access to the front and a covered store area to the side with access to the front. To the front the driveway provides parking for several vehicles leading to the single garage with power, light and personal door to the utility room. The property is offered for sale with NO ONWARD CHAIN.



1 Bathroom



3 Bedrooms



1 Reception

EPC: C 72

Council Tax Band: D

Tenure: Freehold

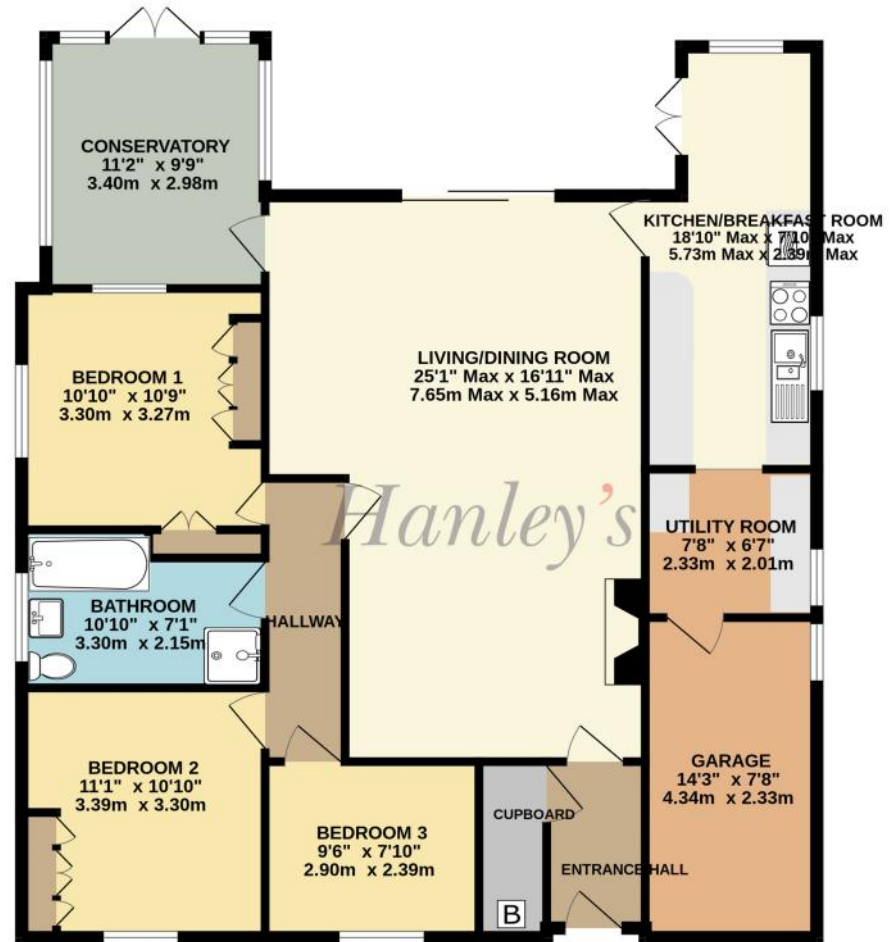


DISCLAIMER. These particulars, whilst believed to be accurate are set out as a general outline for guidance and do not constitute any part of an offer or contract. Intending purchasers should not rely on them as statements or representation of fact, but must satisfy themselves by inspection or otherwise as to their accuracy. No person in this firm's employment has the authority to make or give any representation or warranty in respect of the property. Floor plan measurements and distances are approximate only. We have not carried out a detailed survey nor tested the services, appliances or specific fittings. Your home is at risk if you do not keep up repayments on a mortgage or other loan secured on it.





GROUND FLOOR
1265 sq.ft. (117.5 sq.m.) approx.



TOTAL FLOOR AREA: 1265 sq.ft. (117.5 sq.m.) approx.
Whilst every attempt has been made to ensure the accuracy of the floorplan contained here, measurements of doors, windows, rooms and any other items are approximate and no responsibility is taken for any error, omission or mis-statement. This plan is for illustrative purposes only and should be used as such by any prospective purchaser. The services, systems and appliances shown have not been tested and no guarantee as to their operability or efficiency can be given.
Made with Metropix ©2025

Hanley's Estate Agents
25 High Street, Highworth, SN6 7AG
Tel: 01793 762005 mail@hanleys.co.uk

