



High Street, Highworth, SN6 7AG

£350,000
(Offers in Excess of)

Hanley's

High Street Highworth SN6 7AG

Nestled in the heart of Highworth just off the High Street this charming three bedroom semi-detached property offers a wealth of character features including exposed brick stonework and vaulted ceilings. The accommodation comprises on the ground floor: Large 23ft x 24ft 'L' shaped living/dining room with French doors to the rear garden., fitted kitchen with built in oven, hob, fridge freezer and dishwasher, downstairs cloakroom and bedroom three. To the first floor: galleried landing, two double bedrooms and bathroom with W.C. bidet, bath and separate shower cubicle. The property also benefits from gas radiator central heating. Outside there is a southerly facing garden to the rear mainly laid to lawn with patio area enclosed by stone walls and wood panelled fencing and a walled garden to the front. Allocated parking is available to the rear of the property for two vehicles. The property is offered for sale with NO ONWARD CHAIN.



1 Bathroom



3 Bedrooms



1 Reception

EPC: D 64

Council Tax Band: C

Tenure: Freehold

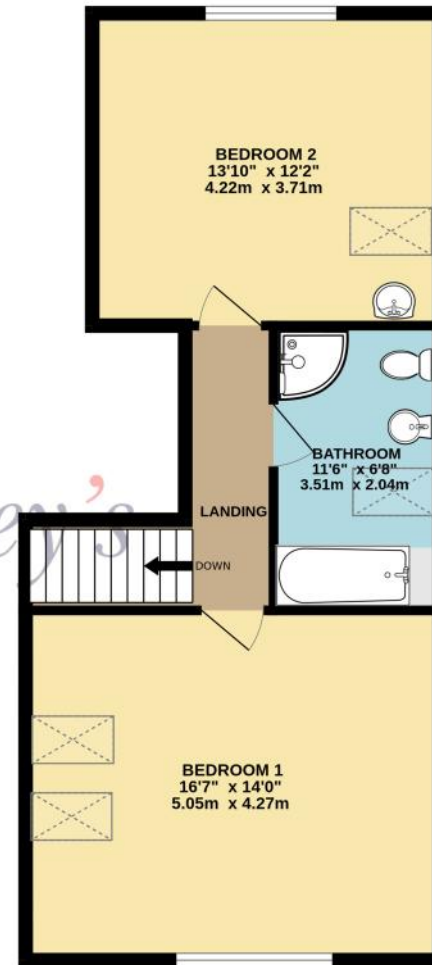


DISCLAIMER. These particulars, whilst believed to be accurate are set out as a general outline for guidance and do not constitute any part of an offer or contract. Intending purchasers should not rely on them as statements or representation of fact, but must satisfy themselves by inspection or otherwise as to their accuracy. No person in this firm's employment has the authority to make or give any representation or warranty in respect of the property. Floor plan measurements and distances are approximate only. We have not carried out a detailed survey nor tested the services, appliances or specific fittings. Your home is at risk if you do not keep up repayments on a mortgage or other loan secured on it.

GROUND FLOOR
738 sq.ft. (68.6 sq.m.) approx.



1ST FLOOR
552 sq.ft. (51.3 sq.m.) approx.



TOTAL FLOOR AREA : 1290 sq.ft. (119.8 sq.m.) approx.

