



The Dormers, Highworth, SN6 7PD

£425,000  
(Subject to Contract)

*Hanley's*

## The Dormers Highworth SN6 7PD

Situated in a quiet cul-de-sac location, this four bedroom detached house is set on a corner plot with far reaching views to the rear. The property offers the potential to update and extend (stpp) with the spacious accommodation comprising: Entrance porch, entrance hall, cloakroom, living room with French doors opening to the rear garden, separate dining room, kitchen with utility cupboard with power and plumbing for a washing machine, breakfast room with doors to the lean to with power, light, and French doors to the garden and door to the garage with power, light and electric roller door. To the first floor is a shower room and four good sized bedrooms; bedroom two with fitted wardrobe. The property further benefits from gas radiator central heating and double glazing. Outside to the front is a large driveway and garden laid to lawn with gated access to the rear and side garden with patio area and a selection of shrub and flower borders. The side garden has been paved and houses a greenhouse and shed. The property is offered for sale with **NO ONWARD CHAIN**.



**1 Bathroom**



**4 Bedrooms**



**2 Receptions**

**EPC: D 59**

**Council Tax Band: E**

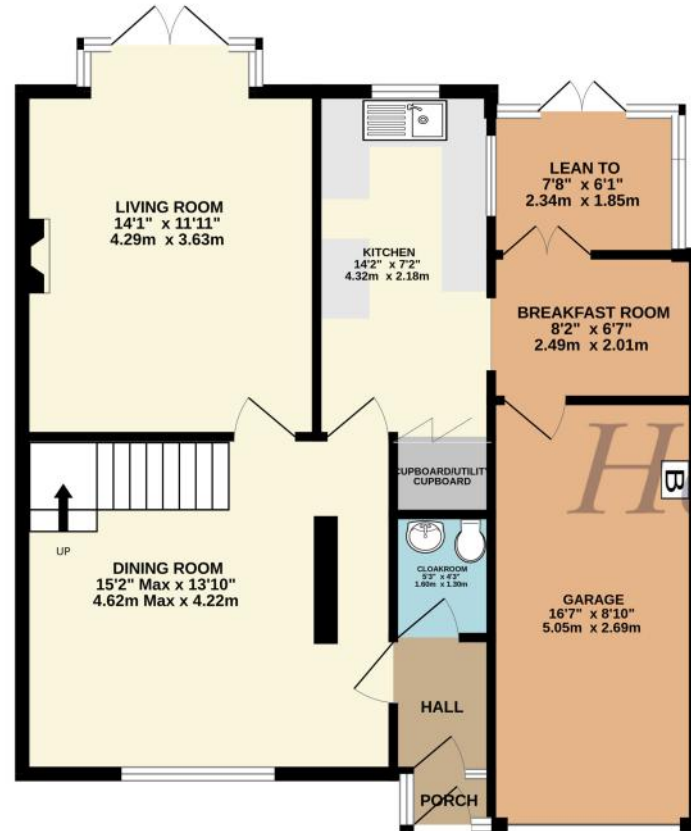
**Tenure: Freehold**



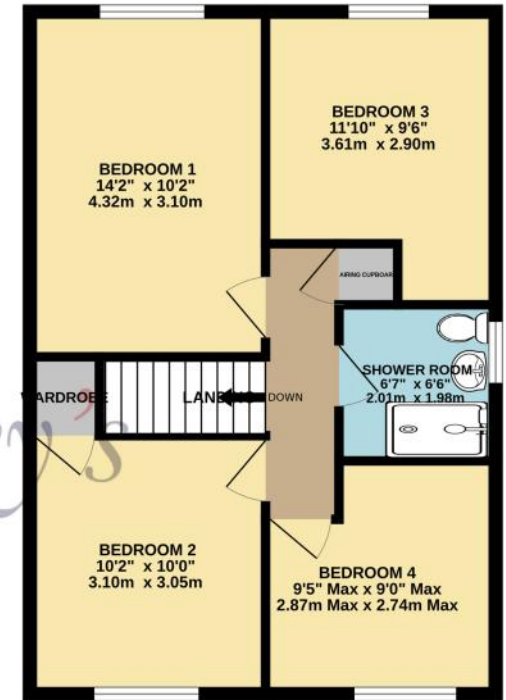
**DISCLAIMER.** These particulars, whilst believed to be accurate are set out as a general outline for guidance and do not constitute any part of an offer or contract. Intending purchasers should not rely on them as statements or representation of fact, but must satisfy themselves by inspection or otherwise as to their accuracy. No person in this firm's employment has the authority to make or give any representation or warranty in respect of the property. Floor plan measurements and distances are approximate only. We have not carried out a detailed survey nor tested the services, appliances or specific fittings. Your home is at risk if you do not keep up repayments on a mortgage or other loan secured on it.



GROUND FLOOR  
793 sq.ft. (73.7 sq.m.) approx.



1ST FLOOR  
535 sq.ft. (49.7 sq.m.) approx.



TOTAL FLOOR AREA: 1328 sq.ft. (123.3 sq.m.) approx.

Whilst every attempt has been made to ensure the accuracy of the floorplan contained here, measurements of doors, windows, rooms and any other items are approximate and no responsibility is taken for any error, omission or mis-statement. This plan is for illustrative purposes only and should be used as such by any prospective purchaser. The services, systems and appliances shown have not been tested and no guarantee as to their operability or efficiency can be given.  
Made with Metropix ©2024

