



Robinscroft, Blunsdon, Swindon, SN25 2TH

£300,000
(Offers in excess of)

Hanley's

Robinscroft, Blunsdon, SN25 2TH

An attractive three bedroom semi-detached house situated in a cul-de-sac location. The well presented accommodation has been improved by the current owners and comprises: entrance hall with stairs to the first floor. W.C., living room, fitted kitchen/dining room with integrated appliances including gas hob with extractor over, oven, dishwasher, fridge, freezer and washing machine, understairs storage cupboard and French doors which open onto the rear garden. To the first floor: landing with built-in storage cupboard, access to insulated loft space, stylishly re-fitted bathroom suite with free standing roll top bath, W.C. and wash basin, bedroom one with en-suite shower room, two further bedrooms; one with fitted wardrobes. Outside to the rear is an enclosed garden which has been landscaped with two paved patio areas, lawn, decking and panel fencing which provides a secluded area. Gated side access, outside tap and power point. To the front is blocked driveway parking for two vehicles, an area laid to stone chippings and paved path. Gated side access leads to the rear. Built-in 2019 the property has the remainder of the NHBC certificate and all the benefits you have with a newly built property including an entire home ventilation system. There is a maintenance charge for the cu-de-sac which is to be confirmed.



2 Bathrooms



3 Bedrooms



1 Reception

EPC: B84

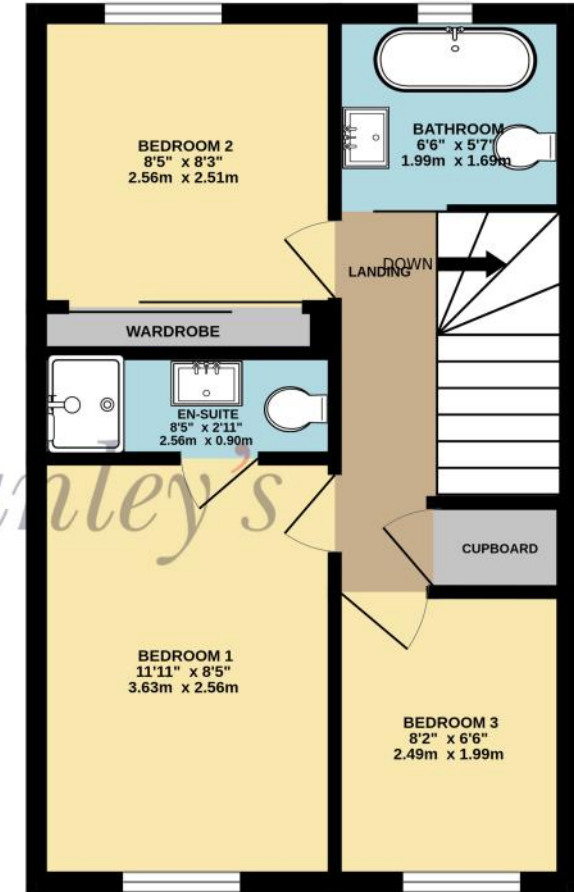
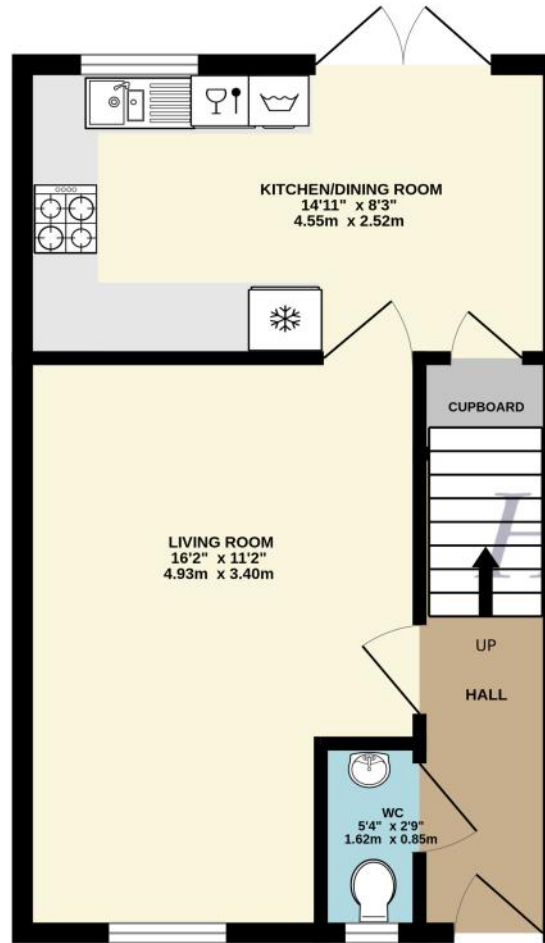
Council Tax Band: D

Tenure: Freehold



DISCLAIMER. These particulars, whilst believed to be accurate are set out as a general outline for guidance and do not constitute any part of an offer or contract. Intending purchasers should not rely on them as statements or representation of fact, but must satisfy themselves by inspection or otherwise as to their accuracy. No person in this firm's employment has the authority to make or give any representation or warranty in respect of the property. Floor plan measurements and distances are approximate only. We have not carried out a detailed survey nor tested the services, appliances or specific fittings. Your home is at risk if you do not keep up repayments on a mortgage or other loan secured on it.





TOTAL FLOOR AREA : 727 sq.ft. (67.6 sq.m.) approx.

Whilst every attempt has been made to ensure the accuracy of the floorplan contained here, measurements of doors, windows, rooms and any other items are approximate and no responsibility is taken for any error, omission or mis-statement. This plan is for illustrative purposes only and should be used as such by any prospective purchaser. The services, systems and appliances shown have not been tested and no guarantee as to their operability or efficiency can be given.

Made with Metropix ©2025

Hanley's Estate Agents
 25 High Street, Highworth, SN6 7AG
 Tel: 01793 762005 mail@hanleys.co.uk

