



Grove Orchard, Highworth, SN6 7LB

£515,000
(Subject to Contract)

Hanley's

Grove Orchard Highworth SN6 7LB

Situated in a sought after cul-de-sac location this extended four bedroom detached property offers spacious and well presented accommodation comprising: Entrance hall, living room with doors to the rear garden, separate dining room with double doors leading the stylish re-fitted kitchen/breakfast room with built-in double oven, hob, fridge, freezer and dishwasher, tiled flooring and doors to the rear garden, bedroom one with fitted wardrobes and en-suite shower room, three further bedrooms, bathroom, shower room, a separate W.C and hand basin. The property benefits from gas radiator central heating, double glazing and part under flooring heating to the kitchen/breakfast room. Outside to the front is an attractive garden which is mainly laid to lawn with a selections of shrubs and trees. Block paved driveway provides parking for several vehicles leading to the integral garage with power and light. Side access leads to the rear garden which is enclosed by wood panelled fencing and is mainly laid to lawn with large patio area and a selection of shrubs and bushes. The property is offered for sale with **NO ONWARD CHAIN**.



3 Bathrooms



4 Bedrooms



2 Receptions

EPC: C 72

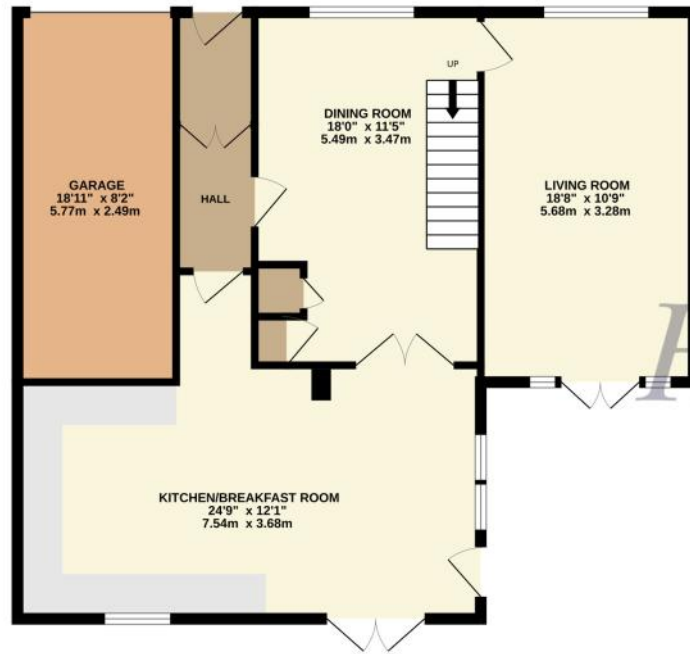
Council Tax Band: E

Tenure: Freehold



DISCLAIMER. These particulars, whilst believed to be accurate are set out as a general outline for guidance and do not constitute any part of an offer or contract. Intending purchasers should not rely on them as statements or representation of fact, but must satisfy themselves by inspection or otherwise as to their accuracy. No person in this firm's employment has the authority to make or give any representation or warranty in respect of the property. Floor plan measurements and distances are approximate only. We have not carried out a detailed survey nor tested the services, appliances or specific fittings. Your home is at risk if you do not keep up repayments on a mortgage or other loan secured on it.

GROUND FLOOR
913 sq.ft. (84.8 sq.m.) approx.



1ST FLOOR
707 sq.ft. (65.7 sq.m.) approx.

