



Lechlade Road, Highworth, SN6 7HQ

£390,000  
(Subject to Contract)

*Hanley's*

## Lechlade Road Highworth SN6 7HQ

A well presented Victorian three bedroom semi-detached house situated a short walk of the High Street with the benefit of off road parking for two vehicles and garage located to the rear. Updated in recent years, the accommodation comprises: Entrance hall with storage cupboards, sitting room/dining room with brick built fireplace, fitted shelving and French doors opening onto the rear garden, re-fitted kitchen/breakfast room and cloakroom/utility room. To the first floor: landing, three bedrooms; bedroom one with fitted wardrobes and eaves storage, spacious family bathroom with bath and separate shower cubicle. The property further benefits from gas radiator central heating and double glazing. Outside to the rear is an enclosed westerly facing garden with paved patio and an area laid to artificial grass, large garden shed, garage with power and personal door to the garden. Gated rear access leads to the driveway offering parking for two vehicles.



**1 Bathroom. 1 Cloakroom/utility**



**3 Bedrooms**



**1 Reception**

**EPC: C 69**

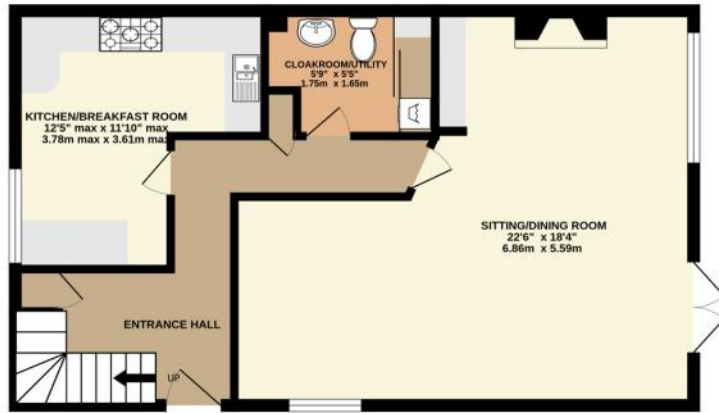
**Council Tax Band: D**

**Tenure: Freehold**



**DISCLAIMER.** These particulars, whilst believed to be accurate are set out as a general outline for guidance and do not constitute any part of an offer or contract. Intending purchasers should not rely on them as statements or representation of fact, but must satisfy themselves by inspection or otherwise as to their accuracy. No person in this firm's employment has the authority to make or give any representation or warranty in respect of the property. Floor plan measurements and distances are approximate only. We have not carried out a detailed survey nor tested the services, appliances or specific fittings. Your home is at risk if you do not keep up repayments on a mortgage or other loan secured on it.

GROUND FLOOR  
556 sq.ft. (51.7 sq.m.) approx.



1ST FLOOR  
510 sq.ft. (47.4 sq.m.) approx.



214 sq.ft. (19.9 sq.m.) approx.

