



Lynt Road, Inglesham, Swindon, SN6 7QX

£485,000  
(Subject to Contract)

*Hanley's*

# Lynt Road Inglesham Swindon SN6 7QX

A beautifully presented four bedroom semi-detached house set on a large plot in the small village of Inglesham, ideally located close to open countryside, the Thames Path, and the popular market towns of Highworth and Lechlade. The property has been tastefully updated by the current owners with the accommodation comprising: Entrance hall, cloakroom, fitted kitchen with integrated double oven, electric hob, dishwasher and large storage cupboard, separate fitted utility room with space for washing machine, living room with wood burning stove, study/family room and dining room with French doors opening onto the rear garden. To the first floor are four bedrooms; two with fitted wardrobes and a re-fitted family bathroom with bath and shower over. The property further benefits from gas radiator central heating and double glazing. Outside to the rear is a large mature garden laid to lawn with patio area, outbuildings, garden shed and greenhouse. Gated access to the side leads to the front garden with lawn, shrub and flower borders. A block paved driveway provides parking for two vehicles.



**1 Bathroom & 1 Cloakroom with W.C.**



**4 Bedrooms**



**3 Receptions**

**EPC: D 67**

**Council Tax Band: D**

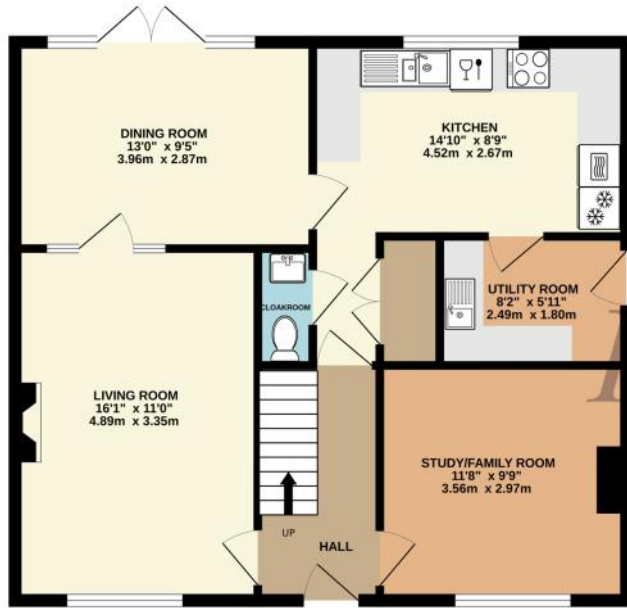
**Tenure: Freehold**



DISCLAIMER. These particulars, whilst believed to be accurate are set out as a general outline for guidance and do not constitute any part of an offer or contract. Intending purchasers should not rely on them as statements or representation of fact, but must satisfy themselves by inspection or otherwise as to their accuracy. No person in this firm's employment has the authority to make or give any representation or warranty in respect of the property. Floor plan measurements and distances are approximate only. We have not carried out a detailed survey nor tested the services, appliances or specific fittings. Your home is at risk if you do not keep up repayments on a mortgage or other loan secured on it.



GROUND FLOOR  
703 sq.ft. (65.3 sq.m.) approx.



1ST FLOOR  
579 sq.ft. (53.8 sq.m.) approx.



TOTAL FLOOR AREA : 1282 sq.ft. (119.1 sq.m.) approx.





