



Magdalene Close, South Marston, SN3 4FR

£319,000
(Subject to Contract)

Hanley's

Magdalene Close South Marston SN3 4FR

An attractive three bedroom semi-detached property positioned in a desirable village location within a short, level walk to the primary school and village hall, and ideally placed for easy access to the A420 and A419. Built in 2021, the property benefits from the remainder of the NHBC certificate with well appointed accommodation which comprises: Entrance hall, cloakroom, living room, kitchen/dining room with integrated washing machine, fridge/freezer, dishwasher, oven, gas hob with extractor fan over, large storage cupboard and French doors opening to the rear garden. To the first floor is a spacious landing with airing cupboard (currently housing a tumble dryer), a family bathroom and three bedrooms; bedroom one with en-suite shower room and two with fitted wardrobes. The property further benefits from gas radiator central heating and double glazing. Outside to the rear is an enclosed, south west facing garden with patio, area laid to lawn, garden shed and gated access to the side which leads to the tandem driveway with parking for two vehicles. The current management charge is: £291.86 per annum (January 2026 - December 2026).



2 Bathrooms



3 Bedrooms



1 Reception

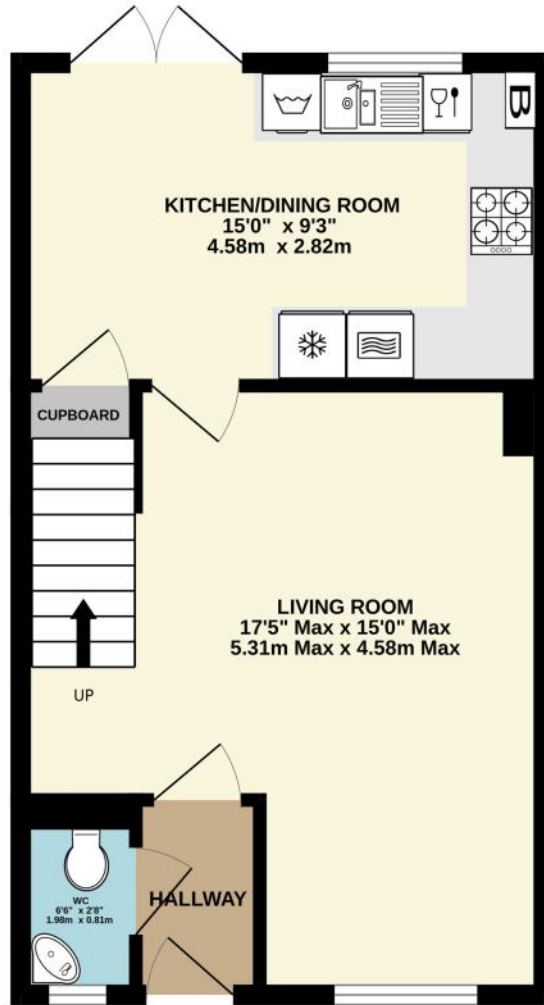
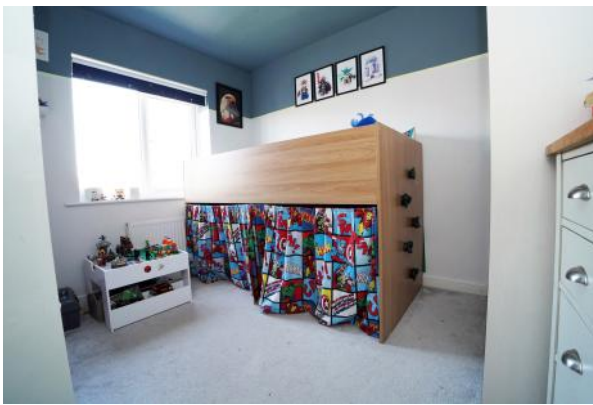
EPC: B 84

Council Tax Band: C

Tenure: Freehold



DISCLAIMER. These particulars, whilst believed to be accurate are set out as a general outline for guidance and do not constitute any part of an offer or contract. Intending purchasers should not rely on them as statements or representation of fact, but must satisfy themselves by inspection or otherwise as to their accuracy. No person in this firm's employment has the authority to make or give any representation or warranty in respect of the property. Floor plan measurements and distances are approximate only. We have not carried out a detailed survey nor tested the services, appliances or specific fittings. Your home is at risk if you do not keep up repayments on a mortgage or other loan secured on it.



Hanley's



TOTAL FLOOR AREA : 790 sq.ft. (73.4 sq.m.) approx.

Hanley's Estate Agents
25 High Street, Highworth, SN6 7AG
Tel: 01793 762005 mail@hanleys.co.uk

