



Parsonage Court, Highworth, Swindon, SN6 7TJ

£239,995
(Leasehold)

Hanley's

A well presented two bedroom semi-detached house set within the sought after Parsonage Court development for the over 55's. A particular feature of the property is its patio garden with private parking area to the front. The light and spacious accommodation is set over two floors and briefly comprises: entrance hall with storage, stairs with stair-lift, W.C./basin cloakroom with space for washing machine, dual aspect living/dining room with feature fireplace and patio doors opening onto the garden, re-fitted modern kitchen with integrated oven, microwave, dishwasher, electric hob and fridge/freezer. To the first floor is a spacious landing leading to two bedrooms, both with fitted wardrobes and a bathroom with bath and separate shower cubicle. Outside is an established garden to the side of the property with patio area and border, to the front is the private parking space. The property benefits from 'Call Care Alarm' electric storage heating, stair-lift and the Parsonage Court development offers a laundry room, washing lines, residents' lounge with further lounge/conservatory, residents' parking, communal gardens and a visitors cottage available to rent per night, on-site house manager.. The property is offered for sale with **NO ONWARD CHAIN**.

Leasehold property with a remaining lease of 115 years which has been extended to the 1st January 2140. There is a service charge of £1,899.35 paid every six months. Ground rent: £285 paid every six months.



1 Full Bathroom, 1 Ground floor W.C.



2 Bedrooms

Hall with Stair-lift



1 Reception

EPC: D 55

Council Tax Band: C

Tenure: Leasehold

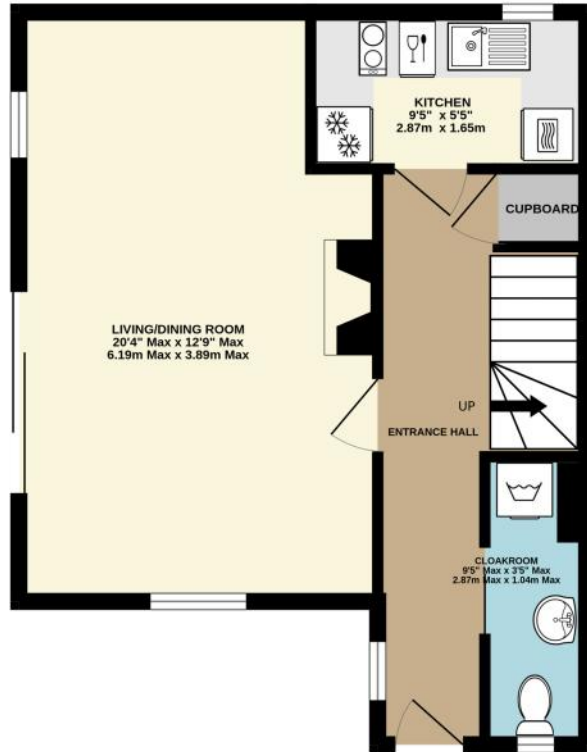


DISCLAIMER. These particulars, whilst believed to be accurate are set out as a general outline for guidance and do not constitute any part of an offer or contract. Intending purchasers should not rely on them as statements or representation of fact, but must satisfy themselves by inspection or otherwise as to their accuracy. No person in this firm's employment has the authority to make or give any representation or warranty in respect of the property. Floor plan measurements and distances are approximate only. We have not carried out a detailed survey nor tested the services, appliances or specific fittings. Your home is at risk if you do not keep up repayments on a mortgage or other loan secured on it.

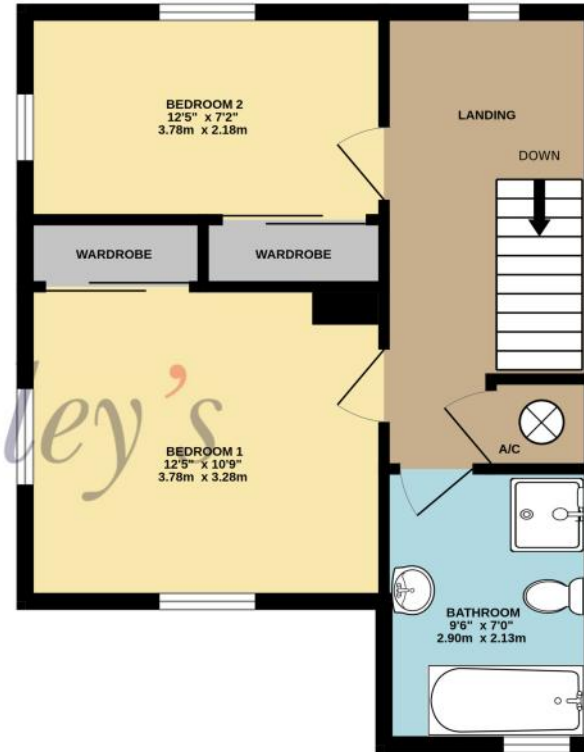


49 Parsonage Court, Highworth, SN6 7TJ

GROUND FLOOR
424 sq.ft. (39.4 sq.m.) approx.



1ST FLOOR
430 sq.ft. (40.0 sq.m.) approx.



TOTAL FLOOR AREA : 854 sq.ft. (79.3 sq.m.) approx.

Whilst every attempt has been made to ensure the accuracy of the floorplan contained here, measurements of doors, windows, rooms and any other items are approximate and no responsibility is taken for any error, omission or mis-statement. This plan is for illustrative purposes only and should be used as such by any prospective purchaser. The services, systems and appliances shown have not been tested and no guarantee as to their operability or efficiency can be given.
Made with Metropix ©2025

Hanley's Estate Agents
25 High Street, Highworth, SN6 7AG
Tel: 01793 762005 mail@hanleys.co.uk

