



Hanley's  
For Sale  
01793 762005  
Eggar, Swindon, Highworth

Grove Hill, Highworth, Swindon, SN6 7JN

£550,000  
(Offers in Excess of)

*Hanley's*

# Grove Hill Highworth, SN6 7JN

A beautifully presented four bedroom detached property set on a corner plot in a sought after location. The stylish and flexible accommodation comprises: Entrance hall with steps down to the study/bedroom five and shower room, dual aspect living room with wood burning stove, split level kitchen/dining room with underfloor heating to the kitchen area, integrated dishwasher and central island with storage. to the first floor there is a master bedroom with dressing area and large en-suite bathroom with bath and separate shower cubicle, three further bedrooms and a family bathroom. The property also benefits from gas radiator central heating and double glazing. Outside there is an electric car charging point, block paved driveway leading to the attached double length garage with power, light and personal door to the rear garden. To the rear of the property is an enclosed garden which has been landscaped with a covered seating area, detached workshop with power and light, an area laid to lawn with a selection of tree and shrub borders and a paved patio.



**3 Bathrooms**



**4/5 Bedrooms**



**2/3 Receptions**

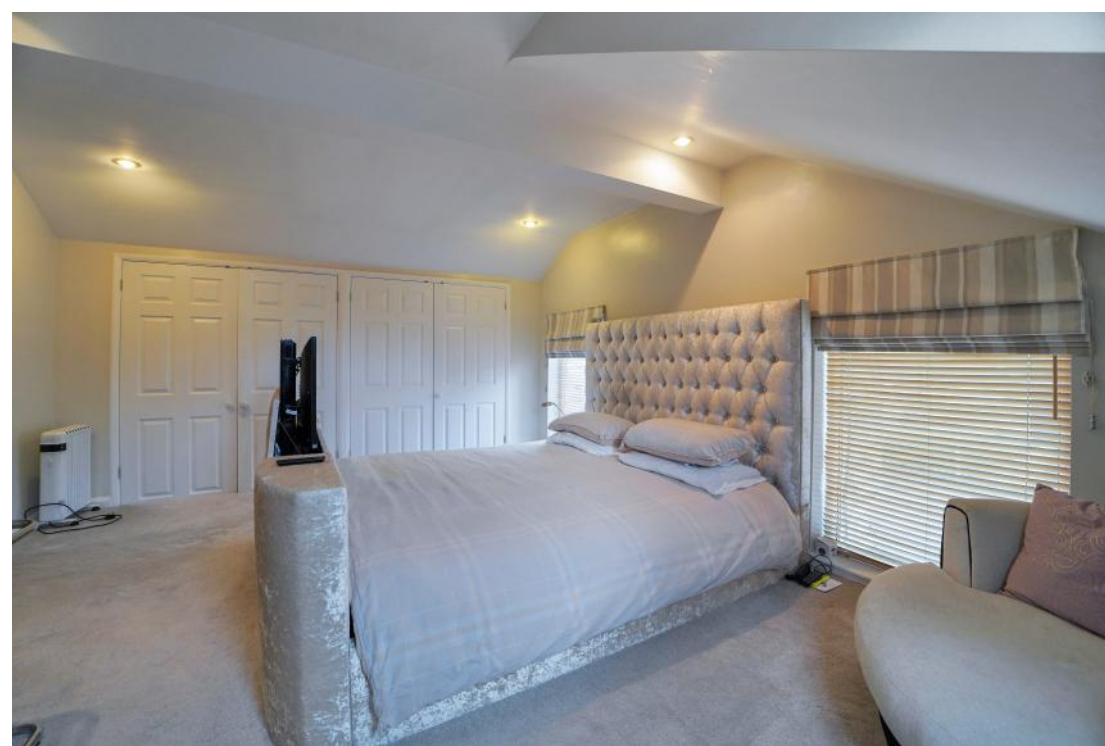
**EPC: D 66**

**Council Tax Band: F**

**Tenure: Freehold**



DISCLAIMER. These particulars, whilst believed to be accurate are set out as a general outline for guidance and do not constitute any part of an offer or contract. Intending purchasers should not rely on them as statements or representation of fact, but must satisfy themselves by inspection or otherwise as to their accuracy. No person in this firm's employment has the authority to make or give any representation or warranty in respect of the property. Floor plan measurements and distances are approximate only. We have not carried out a detailed survey nor tested the services, appliances or specific fittings. Your home is at risk if you do not keep up repayments on a mortgage or other loan secured on it.

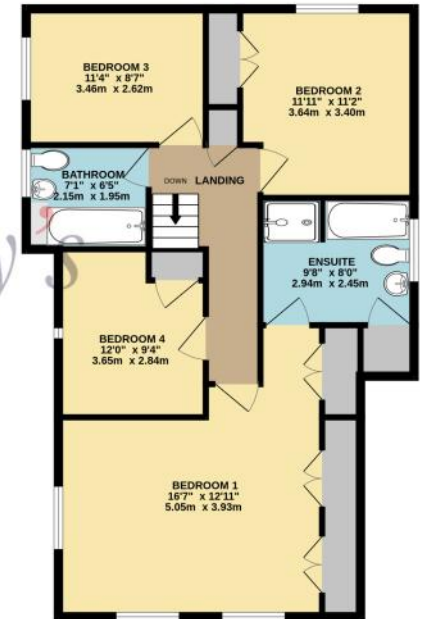






GROUND FLOOR  
1258 sq.ft. (116.9 sq.m.) approx.

1ST FLOOR  
843 sq.ft. (78.3 sq.m.) approx.



TOTAL FLOOR AREA : 2101 sq.ft. (195.2 sq.m.) approx.

Hanley's Estate Agents  
25 High Street, Highworth, SN6 7AG  
Tel: 01793 762005 mail@hanleys.co.uk